



# THE SHELFORD STAR

## WEEKLY SCHOOL UPDATE

*We live and work in harmony with love for one another,  
so we can achieve our potential within a community of life-long learners*

10th November 2023

Vol. 9

### NEWSLETTER IN 60 SECONDS

- Remembrance
- Kindness Week
- Staff Update
- Christmas Events
- Farewell to Mrs. Rose
- PTA Update
- Key Dates
- Announcements
- Celebration Worship

Dear Members of the Great and Little Shelford Community,

I hope this week's newsletter finds you and your family well. This Friday, we enjoyed a beautiful service led by Year 6 on Remembrance.

Linked to their recent learning around World War I, Year 6 led the service with a variety of engaging opportunities for us to reflect.

We saw and heard about some creative artwork that each pupil had individually designed to capture a story around a lost soldier. Another opportunity to reflect included the class reciting the poem 'In Flanders Fields' by John McCrae.

Year 6 also shared a remembrance reflection through song and a series of special prayers. The school took part in a minute's silence and Year 1 shared their poppy wreath at our altar.

Thank you to the Year 6 team for leading this moving service.

# Kindness Week

This coming week marks our Kindness Week. As you will know already, kindness is one of the Shelford Star Values and is rooted in our school's vision, through the inclusion of the New Commandment.



**Love one another,  
as I have loved you**

John 13:34

A new commandment I  
give to you, that you love  
one another: just as I  
have loved you.

In preparation for Kindness Week, we welcomed visitors to lead Anti-bullying sessions with the children. We enjoyed a special performance for Reception to Year 4 children around these themes and workshops for Year 5 and Year 6 children.



Reception to Year 4 children were introduced to two puppets - Millie and Philip who were in the same class. They used to be good friends but their friendship suffered when Millie was encouraged to be unkind to Philip by a different group of children. We looked at how Millie and Philip were feeling and saw how to 'reach out' to Philip: to show him how to stand tall and be confident, what he might say strongly to someone saying something unkind and the importance of telling a trusted adult that these things were happening. **Thank you to Mrs. Ashton for organising the events and Kindness Week.**

**Don't forget odd socks for Monday 13th  
Novmeber!**

# Staff Update

---

This week, we were pleased to appoint two new members to our wonderful team.

Mrs. Georgina Fewell and Miss Pembe Karausta will join our team of Teaching Assistants. Many of you will already know Mrs. Fewell, who is already a member of our parent community and an active volunteer in the school. Miss Karausta joins us as an experienced Teaching Assistant, with qualified teacher status.

I am sure you will join me in warmly welcoming both Mrs. Fewell and Miss Karausta to the Great and Little Shelford community.

Mrs. Alderson's maternity leave has now commenced. We send Mrs. Alderson into her maternity leave with love and prayers for the safe delivery of her baby in the coming days. Over the past two weeks, Mr. Kerin has been working alongside Mrs. Alderson, to enable a smooth transition for Year 6. Meanwhile, Mrs. Sheppard commences her role as Interim Deputy Headteacher.

This coming week, we will be holding interviews for the post of part time Reception Teacher and Administrative Assistants. I will keep you informed of any updates.

# Christmas Events

---

We are pleased to share our usual suite of Christmas events for this half term. Some of these dates have already appeared in the key date summary and appear on our website calendar. However, we now have confirmed dates for the Early Years and Key Stage 1 Nativity performances.

A handy reminder of key Christmas event dates is on the following page and a summary of each can be found *below*.

- **GenR8 Christmas Session** - 30/11/23 - representatives from local Christian parishes lead an interactive and engaging session with children on the hopeful expectation during Advent and the joy of Christmas. This is an event for pupils in school time.
- **Christmas Fair** - 2/12/23 - this year, this will take place in Great Shelford, during the 'light switch-on'. There will be several items led by our PTA. Please do come along and enjoy this as a start to the festivities!
- **Advent Service** - 1/12/23 - pupils in school gather together at the beginning of Advent, to reflect on the preparation in joyful expectation of Christmas. Children from across the school work together to build our Advent wreath in the service.
- **Nativity Performances** - 11/12/23 and 12/12/23 - these performances are led by our Early Years and KS1 pupils, re-telling the story of Christmas. These performances take place in the school hall, each at 2:30pm.
- **Carols by Candlelight** - 14/12/23 - all KS2 pupils attend St. Mary's church at 6pm to lead the Carols by Candlelight Service.
- **Shelford Christmas Day** - 19/12/23 - pupils attend school in smart festive attire and take part in a variety of festive activities. This is also the day where we share our Christmas Service and pupils enjoy a Christmas meal!

30TH  
NOVEMBER



2ND  
DECEMBER



1ST  
DECEMBER



11TH & 12TH  
DECEMBER



14TH  
DECEMBER



19TH  
DECEMBER



# Key Dates Summary

	w/c 13/11/23		Kindness Week – 'Make a noise about bullying!'	School
	13/11/23	All Day	Odd Socks Day Pupils and staff wear odd socks to celebrate diversity and make a charity donation to Antibullying Alliance	School
	17/11/23	2:00pm	Year 3 Class Briefing*	School Hall
	21/11/23	All Day	Year 4 to Verulamium	Verulamium
	24/11/23	2:00pm	Year 4 Class Briefing*	School Hall
	27/11/23	AM	Cross Country Tournament	Netherhall School
	29/11/23	AM	Reception Vision Screening	School
	1/12/23	2:00pm	Year 5 Class Briefing*	School Hall
	6/12/23	AM	Dodgeball Tournament	Coleridge Community College
	8/12/23	9:00am	SEND Coffee Morning	Think Tank
	8/12/23	2:00pm	Year 6 Class Briefing*	School Hall
	TBC	PMs	Nativity Dress Rehearsal and Performances (EYFS, Year 1 and Year 2)	School Hall
	14/12/23	6:00pm	Carols by Candlelight Led by all KS2 pupils	St. Mary's
	19/12/23	All Day	Shelford Christmas Day	School
	19/12/23		Last day of term for pupils	School
	20/12/23	All Day	Professional Development Day – School closed for pupils	
	20/12/23 – 03/01/23		Christmas Holidays	Somewhere festive
	04/01/24		Start of Spring 1	School
	08/01/24 – 10/01/24		Year 5 Burwell Residential	Burwell

## Odd Socks Day

To celebrate this year's Kindness week, we are all wearing odd socks on Monday 13th November and taking collections for Anti-bullying Alliance. You can donate [here](#).



**ANTI-BULLYING  
ALLIANCE**

# PTA Spotlight

---

## **Christmas Lights Switch On - Save the Date!**

This year, our Christmas PTA activity will be supporting the Great Shelford Parish Council in their Lights Switch On which will take place on Saturday 2nd December (3-6pm) at the Memorial Hall. We will be running a hot dog stall as well as a few Christmas games. We will be looking for volunteers from across all year groups to help run the stalls so please do donate half an hour of your time if you can. The PTA will benefit from the proceeds from these stalls.

## **Bike sale**

Thank you to all those who came to the PTA bike sale at the weekend, as well as the volunteers who put so much effort in in the months beforehand and on the actual day. We raised over £2000 for the PTA so it was well worth it!

## **Shopping**

When thinking about Christmas shopping, why don't you earn some extra money for the school? **Easyfundraising [www.easyfundraising.org.uk](http://www.easyfundraising.org.uk)** is an app you just download. Choose your charitable cause (Shelford School PTA). Click on the app each time you do online shopping then choose the retailer you want to spend with and do your shopping from there. Each retailer gives a different percentage to your chosen charity. It doesn't cost you anything extra, it is just a case of one more click. The money soon adds up and helps support the PTA.

**My School Fund [www.myschoolfund.org](http://www.myschoolfund.org)** is another way to earn cash back for both yourself and Shelford School PTA. Sign up and link to Shelford School PTA. Register your debit/credit card. Spend money at participating retailers (e.g. Sainsburys, Argos). Of total spend, receive 1% to the school, 2% to you in the form of an e-gift card. This is a win-win situation!

**Christmas Cards - the final deadline for parents to order Christmas Cards is 13th November. The online shop will close on this date.**

## **Prayer Meeting**

---

A group meet up once a term to pray for our school and local community. We will be meeting at 8.30pm on Thursday 23rd November at 1A Spinney Drive, Great Shelford, CB22 5LY. We would love to have others join us - do come along if you would like to.



# Farewell to Mrs. Rose

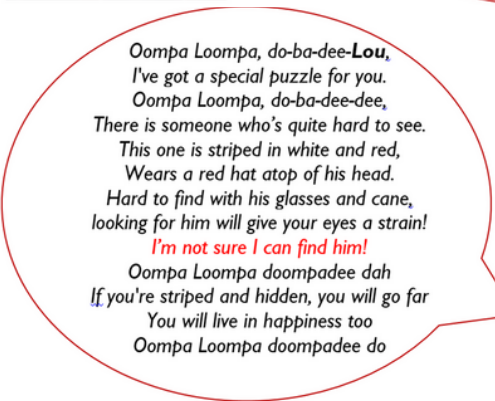
After 13 years of working at Shelford, we said farewell to Mrs. Rose. On her last day, staff dressed with touches of pink and installed the new Mrs. Rose mannequin in the phonebox. Today, we said farewell in Collective Worship with a few riddles, acknowledging Mrs. Rose's love of dressing up! We will still see Mrs. Rose at gymnastics club on Mondays. I am sure you will join me in wishing her the very best for her new adventure.



Oompa Loompa, do-ba-dee-Lou,  
I've got a special puzzle for you.  
Oompa Loompa, do-ba-dee-dee,  
There is someone who'll cook for our tea.  
Have you ever heard of the unbirthday cake?  
This person can virtually anything bake.  
Can you guess who we're talking about?/  
It is certainly some kind of lout...  
**I don't like the look of him!**  
Oompa Loompa do-ba-dee-da,  
If you're a hatter you will go far.  
You will live in happiness too,  
Oompa Loompa do-ba-dee-doo.  
Do-ba-dee-do



Oompa Loompa, do-ba-dee-Lou,  
I've got a special puzzle for you.  
Oompa Loompa, do-ba-dee-dee,  
There is someone who's very hairy.  
He grows this and that and is not small,  
He's a loyal friend and 8 feet tall!  
Friend and pilot to Han Solo;  
To find him to *Kashyyk* go!  
**I'm not sure I understand him!**  
Oompa Loompa doompadee dah  
If you're a Wookiee, you will go far  
You will live in happiness too  
Oompa Loompa doompadee do



Oompa Loompa, do-ba-dee-Lou,  
I've got a special puzzle for you.  
Oompa Loompa, do-ba-dee-dee,  
There is someone who's quite hard to see.  
This one is striped in white and red,  
Wears a red hat atop of his head.  
Hard to find with his glasses and cane,  
looking for him will give your eyes a strain!  
**I'm not sure I can find him!**  
Oompa Loompa doompadee dah  
If you're striped and hidden, you will go far  
You will live in happiness too  
Oompa Loompa doompadee do



Oompa Loompa, do-ba-dee-Lou,  
I've got another puzzle for you.  
Oompa Loompa, do-ba-dee-dee,  
There is someone who's a beard so hairy.  
His magic and power and known far and wide;  
Invisibility, everlasting fire!  
*Girndelwald*, dragon's blood and alchemy;  
Known all-round for amazing wizardry!  
**What a wonderful wizard!**  
Oompa Loompa doompadee dah  
If you're a wizard, you will go far  
You will live in happiness too  
Oompa Loompa doompadee do



Oompa Loompa, do-ba-dee-Lou,  
I've got a final puzzle for you.  
Oompa Loompa, do-ba-dee-dee,  
There is someone who's wonderful to know.  
Baker, runner, coffee aficionado;  
Helping all the children grow!  
**What a wonderful person!**  
Oompa Loompa doompadee dah  
If you're Mrs. Rose, you will go far  
You will live in happiness too  
Oompa Loompa doompadee do

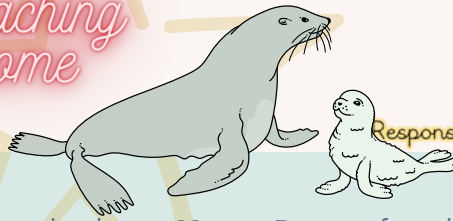




# Celebration Warship

## Class Briefing

Year 2 opened in teaching the whole school some Makaton!



### Kindness

The Cyril Award was awarded to **Mrs. Rose** for kindness appreciated by pupils who noticed her hard work and making learning fun. The Celia Award was awarded to **Max M** for his kindness in noticing someone's disappointment and sacrificing his own place at Art Club to give to someone else. Meanwhile, the following Headteacher's Awards were shared for kindness towards others: **Jessica S, Jake K, Lana R, Sophia T**



### Creativity

This week, we shared three Headteacher's Awards linked to creativity:

**Bertie G-C** - creative ideas in problem solving;  
**Alice T** - creativity through imaginative writing;  
**Edward M** - creative ideas and contributions.



### Resilience

This week, Year 6 achieved the Dinner Winner Award with their resilience around some menu changes! We shared Headteacher's Awards linked to resilience for: **Maeve K-R** - resilience in maths; **Delphie I** - resilience in all areas; **Alex A-R** - resilience in computing. Meanwhile, several children in Year 1 achieved their Bronze Shelford Mile awards.



### Responsibility

This week, we recognised the responsibility shown throughout the school in different ways. Year 3 were awarded the Eco-Award by our pupils monitoring energy consumption. The following pupils achieved a Headteacher's Award: **Bertie G** - motivation to learn; **Jenson B** - helping at lunch; **Serena S** - independently getting ready; **Phoebe I** - concentration; **Evelyn C** - responsibility in all areas of learning.



### Housepoints for our Shelford Star Values

This week's winning house is *domus inspiratorum*  
the house of inspiration:  
**The Eagles**



# Retrofitting for Energy Savings and Financial Relief

Little Shelford  
Memorial Hall

8-10pm Monday 13<sup>th</sup>  
November

Are you feeling the pinch of rising energy bills?

Discover practical solutions to control your expenses and reduce your environmental footprint:

- \* **government grants and incentives**
- \* **state-of-the-art infrared imaging**
- \* **cost-effective retrofitting strategies**
- \* **sustainable living solutions**

Whether you're a homeowner looking to improve your property's value, a landlord, or a tenant, come and speak to our experts in sustainable living and energy efficiency.

