

Kindness

Resilience

# THE SHELFORD STAR

WEEKLY SCHOOL UPDATE

*We live and work in harmony with love for one another, so we can achieve our potential within a community of life-long learners*

1st March 2024

Responsibility

Creativity

Vol. 21

NEWSLETTER IN 60 SECONDS

Dear Members of the Great and Little Shelford Community,

I hope this week's newsletter finds you and your family well after a wonderful half term holiday. This week, it has been great to hear tales of adventures near and far during the children's holidays.

This week, we commenced the Bishop's annual Lenten Challenge. This year's theme is 'This is the time'. It focuses on the environmental factors that need to change to show love towards our world.

We explored the particular theme of flooding, looking at local and global examples. We reflected on the reasoning behind flooding and what we - although small - can do to make a difference.

This week, we also focused on our Courageous Advocacy projects in School Council. Over the calendar year of 2023, School Councillors worked with their classes to share the things they wish to change about different areas. You can see these overleaf, including some actions taken to-date.

- Welcome Back
- Courageous Advocacy Projects
- Curriculum Thread
- Key Dates
- Celebration Worship
- PTA Announcements
- Announcements



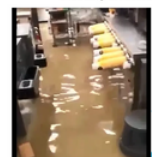
Flooding in Buckden, 2023



Flooding in Alconbury Dec 2023



B645 at Stoneley flooded - December 2023



Flooding of McDonald's at St Ives, December 2023

# Courageous Advocacy Projects

## The school

Target -  
*Improve sustainability*

Actions -

- *New Eco Councillors appointed.*
- *Garden project planned.*
- *Exploration of decarbonisation of the site.*

## Villages

Target -  
*Improve traffic and parking*

Actions -

- *Our Streets project.*
- *Exploring signage for the road.*
- *Promoting responsible parking messages.*

## Cambridgeshire

Target -  
*Supporting the homeless*

Actions -

- *Harvest goods and financial donations for Jimmy's.*
- *Shelford Christmas Day donations to Jimmy's*

## The UK

Target -  
*Share our projects to inspire others*

Actions -

- *Not yet commenced*

## The world

Target -  
*Ensure our targets above have a positive impact on the environment.*

# Curriculum Thread

As we have commenced a new half term, this sees the start of a new curriculum thread for the school. Our carefully-designed curriculum is founded on half termly threads. This means that each class' topic is linked by a key theme to develop and cultivate.

This half term's thread is: **Community - Empathy**. This ties in well to our Lenten Challenge and our Courageous Advocacy projects.

You can find our definition of the threads, including how each thread links to our school's vision, [here](#).

**Reception** - Yuck or Yummy - understanding how people's preferences can differ;

**Year 1** - Terrific Toys - What were our grandparents' toys like? - Imagining what life was like for others within living history.

**Year 2** - Chocolate - How trade impacts communities, including Fairtrade. (

**Year 3** - Stone, Bronze and Iron Ages - communities here, long ago.

**Year 4** - The Boy at the Back of the Class - How can we build a community where all are welcome?

**Year 5** - Egyptology - applying empathy in understanding how to contrast beliefs.

**Year 6** - The Vikings - fearsome raiders or farmers and traders; are we fair to the Vikings? - Understanding communities that settled here long ago.



## World Book Day - 7th March

This year World Book Day is on Thursday 7th March. On this day children are invited to come to school dressed as their favourite book character. Throughout the day there will be a range of whole school and class based activities for the children to take part in. Families are welcome to stay for our World Book Day parade at 9.05am.



## School Prayer Meeting



A group meet up once a term to pray for our school and local community. We will be meeting at 8.30pm on Thursday 21st March at 2 Newton Road, Little Shelford. Do feel free to come along if you would like to join us!

## Key Dates Summary

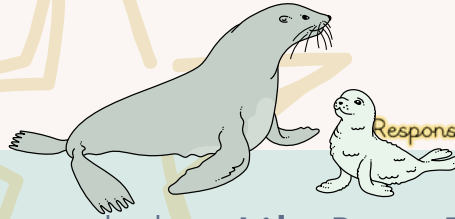
w/c 19/02/24		February Half Term	Somewhere restful
26/02/24		Start of Spring 2	School
11/03/24 – 13/03/24		Y6 Grafham Water Residential	Grafham Water
w/c 11/03/24		British Science Week	School
13/03/24	All Day	Year 1 History off the Page Toys Workshop	School
w/c 25/03/24		Shelford Holy Week	St. Mary's / All Saints' / GSFC / School
25/03/24 & 26/03/24		Kapla Bricks Workshop	School Hall
w/c 25/03/24		Travelling Book Fair	Think Tank
28/03/24	1:30pm	Easter Service	All Saints'
28/03/24		Maundy Thursday – end of term	
29/03/24 – 12/03/24		Easter Holidays	Somewhere peaceful

## Items Wanted for Year 2!

After Easter, Year 2 will be commencing a new project. They would be grateful to receive any unwanted role play items like beds for dolls or small tables, small sofas etc. Additionally, donations of any baby toys for role play would be gratefully received. Please contact Miss Palmer if you are able to help!

# Celebration Worship

## 1st March 2024



### Kindness

The Celia Award was awarded to **Lily-Rose B** for outstanding kindness in helping another child, who was cross. Lily-Rose gave some tips and helped to explain to the child why she thought they were cross. She then suggested how to solve a disagreement. What a star! Meanwhile, **Dinner Winner** was awarded to Year 4 for their kind use of manners at lunchtimes.

### Creativity

We heard about an array of creativity on display this week in Celebration Worship. **Rocky C, Otis C, Hugo E** and **Daisy A** all received headteacher's awards for Creativity.

There were great examples of creativity being applied in different ways, including creative writing.

### Resilience

We shared some Bronze and Silver Shelford Mile awards - well done for your resilience on the Shelford Mile track!

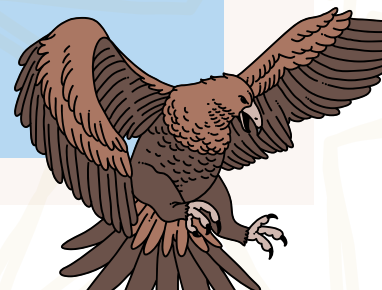
Meanwhile, **Freddie S, Amal R, Orla T** and **Sofia L** received headteacher's awards for resilience.

### Responsibility

We recognised the responsibility shown throughout the school in different ways. The Eco Award was awarded to **Reception**. The following pupils received Headteacher's Awards for responsibility: **Arabella H, Eve C, Arnav V-K, Mariam Z, Jasper C, Celeste C** and **Henry F**

### Housepoints for our Shelford Star Values

*This week's winning house is domus inspiratorum - the house of inspiration:  
The Eagles*



## Education Inclusion Family Advisor Newsletter March 2024

### A Message From Me



I am Naomi Shepherd and I am part of the Education Inclusion Family Advisor team.

Education Inclusion Family Advisors support parents with challenging or worrying behaviour such as: tantrums, meltdowns, worries, self-esteem, bedtime problems, sibling rivalry etc.

### Activity Idea

**Clocks will soon be changing and signs of spring are starting to appear in the garden.**



**Here is an activity to bring a splash of colour inside your home.**

Things you will need -  
-Empty plastic bottles  
-Scissors  
-Paintbrush  
-Paint  
-Straws  
-Pompoms  
-Green card/paper



**First** cut the bottom of the plastic bottles off.  
**Then** paint the bottle base on the inside.  
**Once** dried attach the straw to the back of the flower.  
**Lastly** stick on the pompom to the flower and leaves to the stem.

### Parenting Top Tip

**All children regardless of their age need to have rules and boundaries as part of their daily lives. This provides your child with a sense of security.**

- ❖ Involve the whole family with creating the rules.
- ❖ Ideally, the rules should be written down and displayed. For younger children images may be better than words.
- ❖ Review the family rules as your child gets older and recognise the changing needs of your child.
- ❖ Praise and encouragement will promote new skills, increase self-esteem, and encourage motivation to follow the rules.
- ❖ Discuss why the rules are in place and if they are not followed, ensure consequences are-natural or logical and nonpunitive, related to the behaviour.

### World sleep day 15<sup>th</sup> March 2024

To get a good night sleep we need more than just a comfortable bed. We need a good routine, a suitable snack before bed and a relaxing and calm environment.

Scan the QR code to The Sleep Charity.



Does your child have, or potentially have, an additional need or disability? Pinpoint ([www.pinpoint-cambs.org.uk](http://www.pinpoint-cambs.org.uk)) have lots of information, advice and tips. For Cambridgeshire's Local Offer go to [www.cambridgeshire.gov.uk/residents/children-and-families/local-offer](http://www.cambridgeshire.gov.uk/residents/children-and-families/local-offer)

# PTA Announcements

## Cake at the Gate

The next Cake at the Gate led by Year 5 will be on Friday 8th March. As always there will be a variety of cakes and bakes, including gluten free, on sale after school. We hope to see you there!

## CoOp Local Community Fund

Shelford School PTA is part of the @Coopuk Local Community Fund. To find out more about our project and to choose us as your cause, click here <https://membership.coop.co.uk/causes/83144>



We're part of the Co-op  
Local Community Fund

**Choose us  
as your  
cause**

[coop.co.uk/membership](https://membership.coop.co.uk)

## Charitable gifts

As the end of financial year is approaches, do bear in mind Shelford PTA if you or your workplace are looking to make charitable donations or have matched funding schemes. PTA bank details are:

Account name: Shelford School PTA

Sort code: 30-91-74

Account No: 01248038

## Easter Egg hunt

Save the date... Sunday 24th March (am) for the Easter Egg hunt on the Rec. Poster attached. Do let the PTA know in advance if your child requires a 'special dietary requirement' egg. The Easter Bunny will be making a special appearance!

## Bingo

Save the date for our PTA Bingo event on Thursday 9th May at the GS Memorial Hall, with Rainbows' very own Allison Tomlin taking centre stage. More details to follow!

Rainbow Pre-school

[www.rainbowshelford.co.uk](http://www.rainbowshelford.co.uk)



# EASTER EGG HUNT

Join us for a morning of family fun!

The Pavilion, Great Shelford Recreation Ground

## Sunday 24th March

From 09:30am | last entries 12:00pm

£5 per child | £3.50 per sibling

Complete the hunt to receive a chocolate egg

Special appearance: The Easter Bunny

*Pop-up café:*  
cakes &  
drinks



All proceeds go to Great and Little Shelford Primary School  
PTA - registered charity 1110813





Shelford

Twinning Association

invites you to



## Le Petit Déjeuner Français



**Saturday, 16th March 2024**

**9.00 a.m. – 11.00 a.m.**

**Great Shelford Free Church Hall**

**(Ashen Green entrance)**

***Everyone Welcome***

***French-themed activities for children***

croissants	confiture	jus d'orange
pains au chocolat	Nutella	chocolat chaud
brioches	beurre	thé
baguette		café

*There's no charge, but donations towards the consumables would be welcome*

Reserve your places by 13th March

email: [twinningsec@gmail.com](mailto:twinningsec@gmail.com) or telephone 01223 842483