

THE SHELFORD STAR

WEEKLY SCHOOL UPDATE

*We live and work in harmony with love for one another,
so we can achieve our potential within a community of life-long learners*

1st March 2024

Vol. 22

NEWSLETTER IN 60 SECONDS

Dear Members of the Great and Little Shelford Community,

I hope you are and your families are keeping well. What a busy couple of weeks it has been! Whilst it has been a short half term, it has indeed been a busy one!

- GenR8 Session
- KAPLA
- Shelford Holy Week
- Curriculum Thread in action
- World Book Day
- Celebration Worship
- PTA Announcements
- Announcements

Last week, we welcomed the GenR8 team in worship and we reflected on the quality of forgiveness. We were reminded of the build-up to Easter and Peter's denial of Jesus. When we make mistakes, there is always the chance to show that we are sorry and ask for forgiveness. We have been thinking about being accountable for both our words and actions, and making amends when we need to.

In other worship sessions, we have been thinking about being responsible for both our words and actions, and the importance to treat each other with kindness and respect.



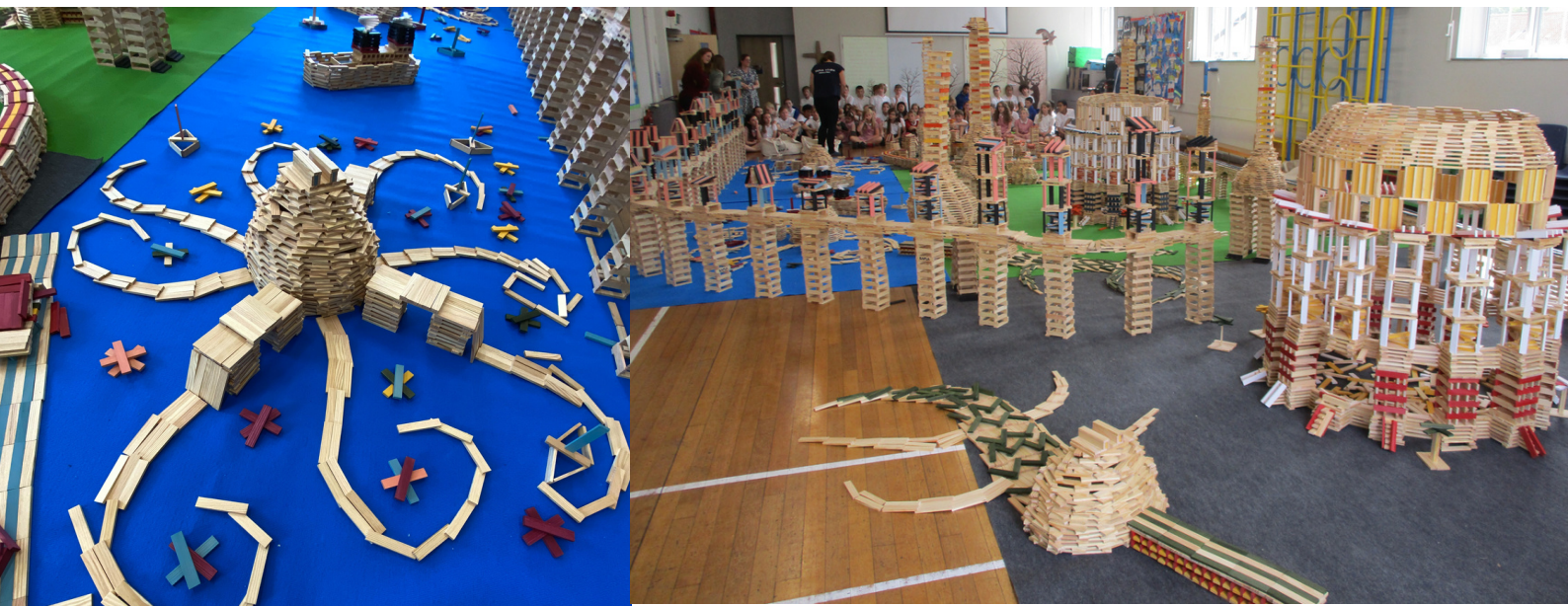
KAPLA - 25th and 26th March

Our Kapla Clubs Workshops started today and will continue tomorrow. All classes will be taking part. If you haven't already paid a contribution of £2.50, please could you do so as soon as possible via School Gateway.


This year parents are invited to come along and view the build once it is finished at the end of the day on Tuesday before it is taken down. If you are interested, families are welcome to come around to the main hall doors from 3:20pm to follow a one-way route to view the finished build. You are welcome by yourselves, or after collection with your child in order for them to share what they have created. (All children will already have viewed the finished build before the end of the day).

We would also like to invite any Y4, Y5 and Y6 families who are available (or anyone else who is interested) to stay and help with the demolition process from approximately 3:40pm on Tuesday. If you are able to wait in the playground until families have finished visiting, all help given with this part of the project will be gratefully received. Full instructions will be given for the demolition and tidying up, but it is usually a fun process (if a little loud!)

Photographs of our last Big Build (the first in a UK school):



Shelford Holy Week Events

A large wooden cross is centered in the background. Overlaid on it are four circular red sun-like icons with radiating lines, each with a tan banner below it. The banners contain text for each day of Holy Week.

*Monday
All Saints
leading
Easter
Worship*

*Tuesday
Experience
Easter -
GSFC*

*Wednesday
Worship at
St. Mary's*

*Thursday
Easter
Service led
by U5 at
All Saints*

Easter Events at GSFC

On Tuesday, KS2 pupils will be coming to Great Shelford Free Church for the Easter Experience Prayer Stations. KS2 parents are very welcome to come along to the church to see what this involves on the following dates/times when the church will be open:

Tuesday 26th March: Easter Prayer Stations at Great Shelford Free Church @ 7:30pm till 9pm

Interactive prayer stations to enable reflection on elements of the Easter story. An opportunity to step aside from the busyness of life to be still with God and reflect on the difference Jesus' death and resurrection means to you. These prayer times are open to everyone.

Wednesday 27th March: Easter Experience Prayer Stations at Great Shelford Free Church @ 2pm till 3:30pm

As above.

Thursday 28th March: Easter Experience Prayer Stations at Great Shelford Free Church @ 10am till 11:30am

As above.

Please **[click here](#)** to see all of the church's Easter events including a special event at Cara Coffee Shop and family Easter service on Sunday!

Curriculum Thread - in action

Year 1 - Toys

Last week Year 1 enjoyed a History Off the Page workshop. The children were 'toyologists' for the day learning all about toys from the past. They thought about how these toys compared to their own toys as well as thinking how the toys worked and what they were made of. During the afternoon the children all made a selection of toys which they took home to share with their families.



Science Week in Reception

Last week Reception had fun carrying out a variety of Science investigations exploring both how things change over time and ways in which we can keep ourselves fit and healthy. Activities included:

Foam tower challenge - children were encouraged to explore how to make the tallest structure using just cocktail sticks and foam noodles - Lots of team work and perseverance was required!

Playdough teeth - we learnt about the importance of toothbrushing in order to avoid decay over time and made our own sets of playdough teeth to learn about the different parts of our mouths - gum / tongue / teeth

Skittle experiment - we developed our observational skills exploring changes over time with skittles in water - it created a rainbow and then all mixed together!

Yeast expt - In RE we explored the effect of yeast to help dough rise, like in our 'hot cross buns' (compared to flat chapatti from our focus story the previous week) - We were fascinated when the yeast bottle blew the balloon up all by itself!

We've also been exploring changes over time outdoors by creating seasons collages and creating our own handwashing posters complete with 'germs' pictures to remind everyone about the importance of handwashing.



World Book Day - 7th March

We enjoyed a wonderful World Book Day on 7th March. Children started the day with their parade of different book characters. Thank you to all the families for supporting such a great event for promoting a love of reading. Throughout the day, we also listened out for a bell, to drop everything and read! This was met with real enthusiasm across the school! Thank you to Miss Beck for organising the day!



World Book Day - 7th March



World Book Day - 7th March



PIC•COLLAGE

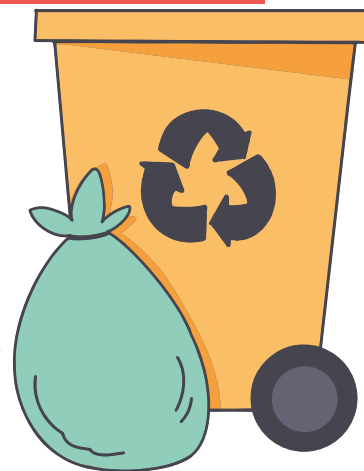
Choir and Orchestra

On Thursday morning the school gathered for wonderful performances by choir and orchestra. The children and adults in orchestra played some of their favourite pieces. Then the choir performed some of the songs that they had learnt for the Young Voices show. We could all see how much the children enjoyed performing.

Mrs Barlow invited Key Stage 2 children to join the choir at 8am each Wednesday. Mrs Roberts is also looking for Key Stage 2 children to join the school orchestra. They meet at 8am on Thursdays. She would be particularly interested in hearing from many brass or guitar players. Please contact the school office for more information about either of these clubs.

Big Plastic Count

Thank you for taking part in the Big Plastic Count, it's incredible how much plastic waste we dispose of each week! Children have been able to investigate and reflect on their own plastic footprint. Thank you to Mrs. Terry for arranging this event throughout the school!



Pokemon Cards

Children should not be bringing in personal items to school - including Pokemon cards.

Therapeutic Thinking Approach to Behaviour

This approach to behaviour is a licensed product, owned and administrated by Therapeutic Thinking Ltd (<https://therapeuticthinking.co.uk>). It has been adopted county-wide by the Local Education Authority, and by others, including two of the largest Multi-Academy Trusts (MATs) in the region - DEMAT, the Church of England MAT, and Anglian Learning, who oversee Sawston Village College, to where many of our pupils move on. Governors strongly support this approach as it sits directly in line with our Christian vision of inclusion.

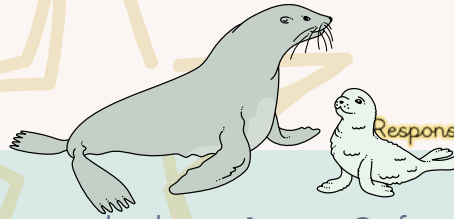
Therapeutic approaches to behaviour are trauma informed, and founded on the belief that behaviour (both positive and negative) is communication. When working with children especially the young, much of this communication is naturally through behaviour, as their language and social skills are still developing. Therapeutic approaches take the view that children do not automatically know how to make positive choices about behaviour, or how to act or react in situations – that this must be proactively taught and learned. Therefore, Shelford school has a strong focus on understanding the root of any behaviour, and what a child may be communicating. Staff also consider how behaviours tell them what a child needs to learn, and consider how that can be taught. Within Therapeutic Thinking there is a clear plan (The Graduated Response) for supporting children with differing levels of need. Where children have a higher level of need and an individual plan, this cannot be discussed with people outside the pupil's family.

Key Dates Summary

| | | | | |
|--|---------------------|--------|-------------------------------|--|
| | w/c 25/03/24 | | Shelford Holy Week | St. Mary's / All Saints' / GSFC / School |
| | 25/03/24 & 26/03/24 | | Kapla Bricks Workshop | School Hall |
| | w/c 25/03/24 | | Travelling Book Fair | Think Tank |
| | 28/03/24 | 1:30pm | Easter Service | All Saints' |
| | 28/03/24 | | Maundy Thursday – end of term | |
| | 29/03/24 – 12/03/24 | | Easter Holidays | Somewhere peaceful |

Celebration Warship

15th March 2024



Kindness

The Celia Award was awarded to **Juno C** for outstanding kindness towards others. The Cyril Award was awarded to **Mrs. Sheppard** and **Mr. Grey**, due to the recent Ofsted inspection. Meanwhile, **Ella B** and **Ember B** received Headteacher's Awards for kindness.

Creativity

This week, we heard about a range of fantastic things that had taken place in school - these demonstrated lots of creativity being applied.

Lyra N received a Headteacher's Award for her creativity. The **Year 4 Class** also received a Headteacher's Award for showing creativity, kindness and responsibility.

Resilience

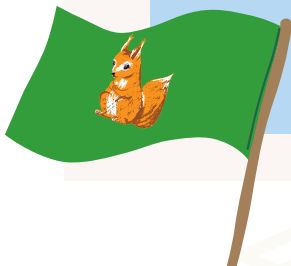
We shared some Bronze and Silver Shelford Mile awards - well done for your resilience on the Shelford Mile track!

Responsibility

We recognised the responsibility shown throughout the school in different ways. Dinner Winner was awarded to **Year 5**. The Eco Award was awarded to **Year 1**. Headteacher's Awards for responsibility were given to **Ffion M** and **Charlotte C**.

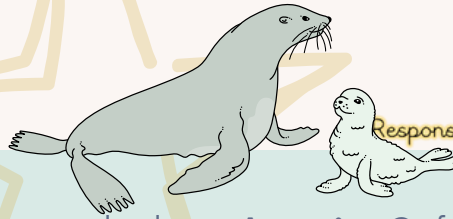
Housepoints for our Shelford Star Values

*This week's winning house is domus pertendentium - the house of determination:
The Red Squirrels*



Celebration Warship

22nd March 2024



Kindness

The Celia Award was awarded to **Austin C** for always cheering others up and showing kindness through good sportspersonship. The Cyril Award was awarded to **Miss Baron, Mrs. Smith and Miss Thompson** for their kindness in ensuring that Year 6 had a brilliant time at Grafham Water on their residential visit.

Creativity

This week, we heard about a range of fantastic things that had taken place in school - these demonstrated lots of creativity being applied.

Isabelle K received a Headteacher's Award for her creativity.

Resilience

We shared some Bronze and Silver Shelford Mile awards - well done for your resilience on the Shelford Mile track!

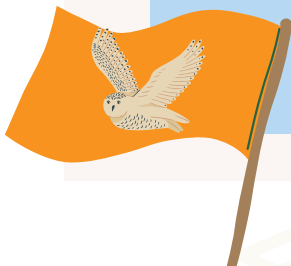
Meanwhile, **Wilf S, Beatrice T, and Maeve K-R** received Headteacher's Awards for demonstrating resilience.

Responsibility

We recognised the responsibility shown throughout the school in different ways. Dinner Winner was awarded to **Year 5**. The Eco Award was awarded to **Reception**. Headteacher's Awards for responsibility were given to **Faranhaz W** and **Sidney S**.

Housepoints for our Shelford Star Values

*This week's winning house is domus praestantium - the house of excellence:
The Owls*



PTA Announcements

Annual Quiz

The annual Quiz night extravaganza was held last weekend and, as expected, it was a fabulous evening of entertainment thanks to the Quiz Team: Andrew Corney, Jonny Nye, Matt Dye, Richard Turner and Peter Ede who clearly put in a tremendous amount of work to make it such a success. Well done to The Gladitraitors, a Year 5 team, who scored 80 points and took the much coveted trophy home! Special thanks to Ellie from the PTA, and other volunteers, who ensured that the event ran smoothly and the bar was well stocked! The event has brought in approx £600 for the PTA so a great success! We will swot up on our moon terminology, flags, Bond films and nostalgic party food for next time!



Coop Local Community Fund -Please sign up

Shelford School PTA is part of the @Coopuk Local Community Fund. To find out more about our project and to choose us as your cause, click [here](#). Nearly £700 has already been raised, which is a significant amount, so do encourage your friends and family to also sign up!

PTA Announcements

Charitable gifts

As the end of financial year is approaches, do bear in mind Shelford PTA if you or your workplace are looking to make charitable donations or have matched funding schemes. PTA bank details are:

Account name: Shelford School PTA

Sort code: 30-91-74

Account No: 01248038

Easter Egg Hunt

Thank you to everyone who supported the Easter Egg Hunt this weekend. It was so well supported that we needed to source extra eggs!

Cake at the Gate

Thanks to Year 5 for bringing in approx £100 to the PTA from their recent cake sale! Look out for Year 6 Cake at the Gate coming up on the last day of term, Thurs 28th March.

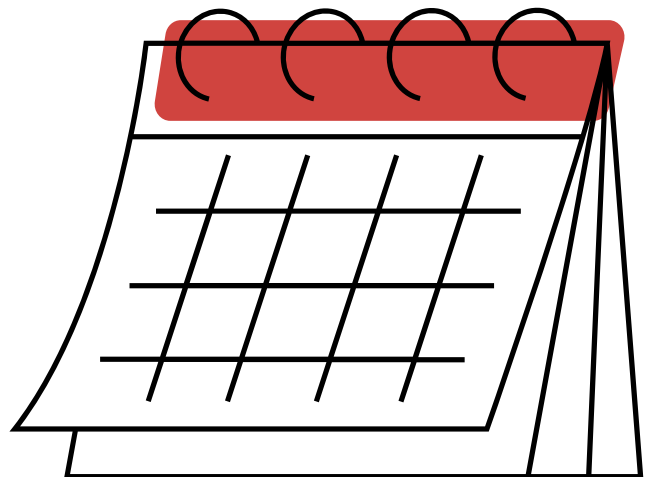
Save the Dates

Bingo - Thursday 9th May - at the GS Memorial Hall

Campout - Saturday 15th June - at school

Summer fair - Saturday 22nd June - at school

Kids' Disco - Wednesday 10th July - after school in the Feast tent



Twinning Association



We have a few spaces left! Book soon to avoid disappointment!

Did you know that our villages of Great and Little Shelford are twinned with a village in France, and that visits are organised by the Shelford Twinning Association every year?

The visits are open to everyone of all ages: single adults, couples, family groups and teenagers. All we ask is that primary aged children are accompanied by a parent, grandparent or approved guardian.

What are the benefits of the visit?

You get to see a lovely part of France. Verneuil en Halatte is a village of a similar size to Great Shelford, surrounded by the Halatte forest and some beautiful open countryside. It is just north of Paris and is close to some interesting towns : Chantilly, Compiègne, Pierrefonds and Senlis, with its beautiful medieval architecture.

It is an opportunity to experience life with a French family and develop friendships with those of a different culture and language. Most families speak some English and are happy to do so but are delighted if you are prepared to have a go at their language. New friendships are forged with your hosts and others whom you meet in the village ... they are a very welcoming and homely group. Visits, entertainment - as well as food and wine - provide for an excellent experience.

If you have children, you have a wonderful opportunity to spend time with them, away from the busyness of home as well as helping to broaden their experience.

Travel to/from Verneuil is by executive coach via the Channel Tunnel or Ferry.

When is the visit in 2024?

In 2024 the visit is planned for Saturday 25th - Tuesday 28th May (the beginning of the school half term).

What is the cost?

We are delighted to inform you that Great Shelford Parish Council are generously supporting this visit and as a result we are able to offer places for children at £45 per child. The cost per adult is £115 per person.

Any extra expenditure?

All travel and trips are included in the cost of the visit. As you will be staying with a family, your only other expenses would be a small gift for the host family, a little pocket money and your travel insurance for the four days.

* Please note that all travelling adults are expected to become members of the Twinning Association if they are not members already (£10 single membership /£15 family membership) otherwise we may fall foul of legislation which would deem us to be acting as a travel agent and, therefore, illegally.

How many will there be in the group?

We hope that the group will consist of approx. 48 people and we will be travelling to/from Verneuil-en-Halatte by executive coach.

I'm interested! What is the next step?

If you think that this is something you would enjoy, please contact either of the following: (sarah.haddow@talk21.com) or Colin Jefferson (colin@frenchfrogs.net) to register your interest. You will then be sent the relevant information and a more detailed form to fill in so that we can match you with a suitable family in France.

Throughout the year, we offer a range of events - illustrated talks, wine-tasting, quiz evenings - to name but a few. Please visit our website for further information: www.shelfordtwinning.org.uk

Education Inclusion Family Advisor County Wide Online Workshops

The Education Inclusion Family Advisor team offers a range of countywide online workshops. We welcome any parent/carer with a child/ren in primary schools.

Getting it right for the Children Session 1- Tuesday 23 April, 12:13:30; session 2 Tuesday 30 April, 12:00-13:30

The workshop is for parents who are separated or in the process of separating from their child's other parent and who are finding it difficult to communicate with one another. It is designed to help parents to manage separation in ways that will be less harmful to their children. Parents will learn ways to improve their communication and negotiation skills to work better with their child's other parent. Parents should attend both sessions.

Sibling Rivalry – Tuesday 7 May, 12:00-13:00

During the workshop we will be exploring the range of feelings that exist between siblings and the needs a child has from its parents and carers in relation to his/her siblings; learning about the factors that can affect sibling relationships and lead to rivalries developing. We will consider the range of behaviours that can be observed between siblings who are not getting on and the role of parents and carers in managing these behaviours. We will spend time covering strategies and think about techniques that will work with all ages but also share those that might be targeted at certain age groups.

What to do when kids push your buttons – Tuesday 14 May, 12:00 – 13:00

During the workshop we will be exploring strategies for parents to remain calm during challenging situations, understand what happens when children get angry and how to help the children develop self-regulation of emotions.

Managing challenging behaviour – Tuesday 21 May, 12:00-13:00

During the workshop we will be exploring what the reasons behind challenging behaviour and supporting parent to understand the reasons behind the behaviour as well as offering strategies for managing situations in a positive way.

To book a place, please click on the link below or scan the QR code:

<https://forms.office.com/e/Dw4JzZ5232>

