

THE SHELFORD STAR

WEEKLY SCHOOL UPDATE

We live and work in harmony with love for one another, so we can achieve our potential within a community of life-long learners

8th December 2023

Vol. 12

NEWSLETTER IN 60 SECONDS

Dear Members of the Great and Little Shelford Community,

I hope this week's newsletter finds you and your family well. This week, the children have been busy continuing to prepare for key Christmas events.

- Christmas Events
- Parent Point
- PTA Update
- Key Dates

Our Reception and Key Stage 1 pupils led a very enjoyable dress rehearsal for the school. In fact, the songs are probably still going around the audience's heads! We look forward to welcoming families for Monday's and Tuesday's performances.

Meanwhile, pupils in Key Stage 2 are preparing for their Carols by Candlelight Service on Thursday 14th December. The service starts at 6pm. **Pupils should return to the school hall between 5:30pm and 5:40pm.** Pupils will then be brought over by school staff to St. Mary's Church. Just a little reminder that pupils (and of course adults) are invited to wear smart non uniform of red, green, silver and gold for the service. We look forward to preparing for this as we continue to journey through Advent.

Our Christmas Postbox will be re-appearing as from Monday 11th December. If pupils wish to send cards to members of the school community, please make sure the name and class of the recipient is written on the envelope!

Staff Update

We are looking for new Teaching Assistant roles at the school. If you or someone you know would be interested in joining our wonderful team, please see the details [here](#).

Rainbow Preschool are looking for a **Preschool Practitioner**. They are also looking for volunteers.

Parent Point



We have a variety of tools in place as part of our day-to-day practice and a number of support mechanisms that we can offer. We have this helpful laid out in our **Early Help Offer**. You can view this on our website [here](#), or via the screenshot below.

Health

- Fruit and vegetable snacks provided up to Year 2
- Liaison with School Nurse Service
- School Games – silver award
- Health topics embedded in the curriculum (Science, PSHCE, PE)
- Variety of sports clubs, some provided free of charge
- Shelford Mile
- Nutritionally balanced school meals, with at least three options each day and a salad bar
- Engagement with NHS services in school (vision screening, heights and weights, flu vaccination)

Social, Emotional, Behaviour and Identity

- Mental Health Champions in school
- Local Mental Health forums
- Mental Health research in school
- Diocesan Wellbeing Projects
- Take 5 approach
- Pupil Leaders (including: Peer Mediators, Play Leaders, Digital Ambassadors, House Prefects, Head Girl/Boy)
- Conflict Resolution Teaching (PSHCE)
- 'Meet and Greet' as required
- Teaching positive behaviour through the Behaviour and Anti-Bullying Policy
- Therapeutic Thinking CPD for staff
- International Schools Award (identity)
- Emotional Wellbeing Team

As always, please do reach out if you or your family require any support. We are always happy to listen, help, support and signpost.

Early Help Offer

Great and Little Shelford CE (A) Primary School

Measures that address all needs:

- Safeguarding Policy
- Logging of concerns
- 4 experienced Designated Safeguarding Leads
- CPD for all staff
- PSHCE Curriculum
- PSHCE Service Membership
- Pupil Priorities raised at all meetings
- Strong school–church–village–international connections
- TAFs, EHA referrals, cases open to EHA
- Liaison with Family Support Practitioners
- Liaison with Social Workers
- Child in Need Plans
- Child Protection Plans
- Referral to: Stars; Romsey Mill; John Huntingdon Charity



Learning and Education

- Pupil Progress Meetings
- Monitoring of assessment systems
- Assessment timetables
- Initial Records of Concern (learning) reported to Inclusion Leader
- Class Briefing Sessions
- External Speech and Language Therapist visits
- Experienced Inclusion Leader, undertaking NASENCo Qualification
- Experienced staff
- Research-based approach in school
- Variety of extra-curricular clubs
- Music tuition (free for pupils eligible for Pupil Premium)
- Parent – Teacher – Pupil Consultations
- Link Specialist Teacher

Parents and Carers, Family and Environmental Factors

- Experienced Inclusion Leader
- Wrap-around care
- Engagement with Young Carers
- Class Briefing Sessions
- Family Support Practitioner referral: John Huntingdon Trust
- Support of the Food Bank
- Engagement with the Education Welfare Officer
- Visible and approachable staff
- Clear complaints procedure
- Active Home-School Association
- Governor-led Shelford School Support Fund
- SENDIASS Parent Courses
- Promotion of Think Family Cambridge Parenting Courses
- Parent Point in weekly newsletter

Christmas Events

We are pleased to share our usual suite of Christmas events for this half term. Some of these dates have already appeared in the key date summary and appear on our website calendar. However, we now have confirmed dates for the Early Years and Key Stage 1 Nativity performances.

A handy reminder of key Christmas event dates is on the following page and a summary of each can be found *below*.

- **GenR8 Christmas Session** - 30/11/23 - representatives from local Christian parishes led a wonderful, interactive session with the school on Thursday. We really enjoyed welcoming the team back and enjoyed exploring the theme of hope at Christmas. If you and your family wish to explore this further, there are some follow-up materials [here](#).
- **Christmas Fair** - 2/12/23 - thank you to everyone involved in helping this event to go smoothly... especially those representing PTA events. Meanwhile, thank you so much to everyone who donated to and purchased tickets for the hamper raffle!
- **Advent Service** - 1/12/23 - pupils in school gathered together at the beginning of Advent. We reflected on Advent being a time of preparation in hopeful expectation and built our Advent Wreath together.
- **Nativity Performances** - 11/12/23 and 12/12/23 - these performances are led by our Early Years and KS1 pupils, re-telling the story of Christmas. These performances take place in the school hall, each at 2:30pm.
- **Carols by Candlelight** - 14/12/23 - all KS2 pupils attend St. Mary's church at 6pm to lead the Carols by Candlelight Service.
- **Shelford Christmas Day** - 19/12/23 - pupils attend school in smart festive attire and take part in a variety of festive activities. This is also the day where we share our Christmas Service and pupils enjoy a Christmas meal!

30TH
NOVEMBER

2ND
DECEMBER

1ST
DECEMBER



11TH & 12TH
DECEMBER

14TH
DECEMBER

19TH
DECEMBER



Key Dates Summary

11/12/23 and 12/12/23	2:30pm	Nativity Dress Rehearsal and Performances (EYFS, Year 1 and Year 2)	School Hall
14/12/23	6:00pm	Carols by Candlelight Led by all KS2 pupils	St. Mary's
19/12/23	All Day	Shelford Christmas Day	School
19/12/23		Last day of term for pupils	School
20/12/23	All Day	Professional Development Day – School closed for pupils	
20/12/23 – 03/01/23		Christmas Holidays	Somewhere festive
04/01/24		Start of Spring 1	School
08/01/24 – 10/01/24		Year 5 Burwell Residential	Burwell
15/01/24	PM	Choir members to Young Voices rehearsal and concert	O2 Arena
02/02/24	2:30pm	Candlemas Service led by Year 2	St. Mary's
16/02/24		End of Spring 1	

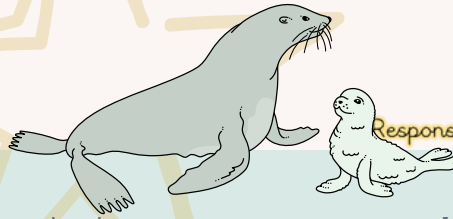
Uniform Reminders

Please remember, PE uniform is the house t-shirt with a plain black or navy blue tracksuit. Other colours are not part of the school's PE uniform.

Earrings must be removed for PE sessions.

Black school shoes are expected on non PE days.

Celebration Warship



Kindness

The Cyril Award was awarded to **Mr. Kerin and Mrs. Page** for kindness appreciated by a volunteer and pupils. They were noticed for the way in which they created a fun and engaging atmosphere at the dodgeball tournament. The Celia Award was awarded to **Henry F** for giving up some of his own lunchtime to help in the hall. Meanwhile, the following Headteacher's Awards were shared for kindness towards others: **Rose C, Henry F**



Creativity

This week, we shared three Headteacher's Awards linked to creativity: **Olivia K, Harry S, Sophia T.**

It was wonderful to hear about the range of creativity shown - from writing, to creative models, to creativity in artwork.



Resilience

We said a huge well done to the Dodgeball Team, who came first in their tournament. They were praised for their excellent sportspersonship. Several children received Headteacher's Awards for their resilience: **Sidney S, Thea N, Henry R, Freddie S.** Meanwhile, several children achieved their Bronze Shelford Mile awards.



Responsibility

This week, we recognised the responsibility shown throughout the school in different ways. Dinner Winner was awarded to **Year 6** for their responsibility shown at lunchtimes. The Eco Award was earned by **Year 3** for ensuring the lowest energy consumption in their class. The following pupils received Headteacher's Awards for responsibility: **Rupert R, Rosie B-E**



Housepoints for our Shelford Star Values

*This week's winning house is domus pertendentium - the house of determination:
The Swans*

