

Year 6

SPaG Samurai

Revision Booklet

Name: _____





The Mystery of the Spilt Rice

Wataru walked into the dōjō and was immediately stopped by a terrible sight. Instead of the pristine, wooden floors that he was so used to seeing, the entire dōjō was covered in a thin layer of dried rice! Looking around, he noticed a split bag by the door. Clearly, someone had been carrying the bag across the room when they had lost their balance. Wanting to know who the messy culprit was, Wataru began looking for clues.

Wataru can't do this alone; he needs your help. It is your job to crack the clues and compare your answers to the list of people who were in the dōjō at the time that the rice was spilt. Will you be able to solve the mystery of the spilt rice?

Good luck!





Who Was in the Dōjō at the Time That the Rice Was Spilt?

Name	Hair Colour	Shoe Type	Do They Wear Glasses?	Age	Favourite Food
Akemi Wiggins	brown	sandals	yes	24	anpan
Benjiro Mercado	brown	football	yes	25	pear
Izumi O'Brien	brown	sandals	no	23	banana
Jacobo Alexander	blonde	ballet	yes	23	bread
Kaede Ito	brown	ballet	no	23	ramen
Kando Farmer	grey	sandals	no	25	anpan
Kaya Flynn	grey	football	yes	23	ramen
Kenji Valencia	brown	sandals	no	23	pear
Mamiko Valentine	blonde	sandals	no	25	pear
Masumi Takada	blonde	sandals	no	23	anpan
Mayuko Sakurai	black	football	yes	23	banana
Ren Hickman	black	trainers	yes	24	anpan
Rini Jensen	brown	sandals	no	23	anpan
Sada Arai	brown	trainers	no	23	pear
Sho Chang	grey	ballet	yes	24	anpan
Sumi Yamamoto	brown	sandals	no	25	ramen
Takuma McMahan	blonde	football	yes	25	ramen
Katherine Kim	brown	sandals	no	23	bread
Yoshiko Ueno	black	trainers	no	24	banana
Yutaka Lozano	brown	trainers	yes	23	anpan

The person who spilt the rice was _____.



Clue One

A Hair-Raising Discovery

Wanting to waste no time, Wataru looks at the first clue. It appears that the culprit left a hair on the bag of rice as they were carrying it across the dōjō.

To find out what colour the hair is, underline all of the determiners in the letter below. Then, count the number of letters in each determiner.

If most of the determiners have **two** letters, the culprit's hair is grey.

If most of the determiners have **three** letters, the culprit's hair is black.

If most of the determiners have **four** letters, the culprit's hair is brown.

If most of the determiners have **five** letters, the culprit's hair is blonde.

Members of the dōjō,

Last night, someone spilt rice all over this floor. I need your help to find the culprit.

It is clear that this person isn't interested in cleaning up their mess. Unfortunately, we have been left with an untidy dōjō.

If you hear anything or find any clues, please let me know.

Thank you for reading this letter.

Wataru.

Most of the determiners have _____ letters.

Therefore, the culprit has _____ hair.



The Mystery of the Spilt Rice

Clue Two A Step in the Right Direction

The second clue makes Wataru convinced that the culprit left in a hurry. Despite there being nobody training in the dōjō at the moment, a single pair of shoes have been left on the rack.

Count the number of prepositions in each sentence and draw a line to the correct amount. The shoes with the most amount of lines drawn to them are sure to belong to the culprit.

The culprit's shoes were found below the coat rack.

Wataru walked across the room and towards the abandoned shoes.

Do you think that we will ever find the culprit?

After the first clue was discovered, Wataru looked for a clue on the door before discovering the shoes.

We think that the rice was spilt during the night.

0

Ballet Shoes

1

Sandals

Wataru thinks that the rice was spilt after the last training session.

2

Football Boots

3

Trainers

The dōjō is large so sweeping the floor will take a long time.

Worried about the mess, Wataru leaned against the wall and sighed.

The spilt rice was on every surface; it was even under the shoe rack and between the floorboards.

The culprit was wearing _____.



Clue Three

It's Clear to See

With two clues down, Wataru looks around for something else that will lead him to the culprit. Suddenly, he spots a broken pair of glasses on the floor. However, Wataru isn't sure if they're a clue or if they're just a red herring.

Read each of the sentences below.

Colour each box that contains the **subject** of the sentence in **blue**.
Colour each box that contains the **object** of the sentence in **green**.

You will need to colour in all of the words that make up the subject or the object. This could include determiners and adjectives as well as nouns and pronouns.

The	naughty	dog	ate	a	pancake.
Claudia	broke	the	bathroom's	small	window.
I	carefully	caught	some	wriggly	tadpoles.
Mary's	pet	frog	caught	the	fly.
Last	week,	Tomasz	ate	my	apple.

If there are more **blue** boxes, the glasses are a clue and the culprit **does** wear glasses.

If there are more **green** boxes, the glasses are a red herring and the culprit **does not** wear glasses.

There are more _____ boxes.

The culprit _____ wear glasses.



Clue Four

An Age-Old Mystery

Finally, it feels as though we're getting closer to catching the culprit. Taking another look around the dōjō, Wataru spots a torn birthday card. While the name of the recipient is missing, their age is clearly visible.

Follow the instructions below to find out the culprit's age.

Colour in each box that has a sentence with an underlined **verb** in it. Then, the culprit's age will be revealed.

I need to <u>brush</u> my pet rabbit daily.	<u>Brush</u> your hair!	My new <u>brush</u> is uncomfortable to use.	This broom will <u>brush</u> all of the fallen leaves away.	A cow will happily <u>brush</u> against this tree.
I love visiting the <u>duck</u> pond.	When the ball comes towards you, don't <u>duck</u> .	Actually, that <u>duck</u> is really a goose.	A runner <u>duck</u> can be over 50cm tall.	We had to <u>duck</u> under the trees to get to the pond.
Carefully, <u>iron</u> all of the shirts.	Could you <u>iron</u> this for me?	The <u>iron</u> statue was incredible.	If you <u>iron</u> that, it will melt.	<u>Iron</u> each item after it has dried.
<u>Link</u> your arms together.	The <u>link</u> on this chain is about to break.	Can you spot the <u>link</u> between these sentences?	Some historians say that they are searching for the missing <u>link</u> .	Sometimes, ants <u>link</u> together to form a bridge.
Did you <u>post</u> that kind message?	<u>Post</u> the letter tomorrow morning.	The <u>post</u> will be arriving soon.	If you're interested, <u>post</u> your name in the box below.	We'll <u>post</u> this missing dog advert around the village.

The culprit is _____ years old.



Clue Five

A Tasty Tidbit

With the list of suspects narrowed down, Wataru looks for a final clue that will allow him to finally solve the mystery of the spilt rice. With a final sweep of the dōjō, he notices a sticky fingerprint on the bag of rice. Whoever spilt the rice was clearly eating their favourite food at the time!

Read the sentences below.

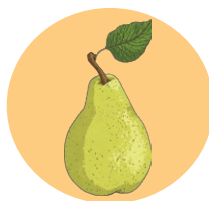
Using the code, write a letter beneath each word according to its word class. Then, look to see which food is hidden among the letters.



raman



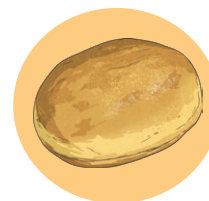
banana



pear



anpan



bread

Wataru	gathered	the	clues	and	looked	at	them.
The	broken	glasses,	the	torn	card	and	the
shoes	helped	him	find	the	sneaky	culprit	quickly.

noun	verb	determiner	conjunction	preposition	pronoun	adjective	adverb
p	r	a	b	d	e	n	m

The culprit's favourite food is _____.

Crack Sanjiro's Secret Samurai Code



Sanjiro needs your help to unlock the Samurai's box of armour. The box is sealed with a padlock which requires a six-digit passcode.

Choose the correct answer to each question.

These digits will then form the passcode to open Sanjiro's box of armour.

Digit One



Which of these is an exclamation sentence?
Circle the digit next to the correct answer.

1

That's really hot!

3

Please sit down quickly!

2

What long hair you have!

4

I can't believe that you have cycled 100 miles!

Digit Two



Read the text below.
How many command sentences can you find? Circle the correct answer.

1

2

3

4

Darcy and Khace arrived at the leisure centre for their first swimming lesson. Dad and Sam were watching from the viewing gallery above.

"Before you jump into the water, put your toes right up to the edge," said the instructor.

The pair, along with everyone else in the class, jumped into the pool with a splash.

"Today, we will start by practising our backstroke," said the instructor. Darcy adjusted her goggles; Khace pulled down his cap. "I'd like you all to swim over to the far side of the pool.

Hold on to the rail and tuck your legs underneath you. It's important that your head is back and your ears are in the water. Push off from the wall when you hear my whistle."

The instructor blew the whistle and the children all set off kicking their legs and flailing their arms.

"Look at that," said Sam. "I can't see who's who down there for all the splashing!" Dad smiled and, once they had all reached the far end of the pool, gave Darcy and Khace an enthusiastic thumbs up.

Digit Three



This question needs to be rewritten as a command.

Which sentence would be correct? Circle the digit next to the correct answer.

Could you open the window so that we can get some fresh air?

- 1 Please open the window so that we can get some fresh air
- 2 I wonder if you could open the window so that we can get some fresh air
- 3 I need you to open that window quickly so that we can get some fresh air
- 4 Opening the window would give us some fresh air - could you do that please

Digit Four



Read the text below.

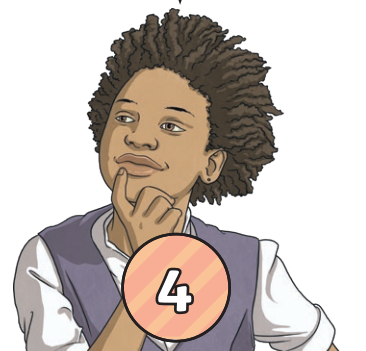
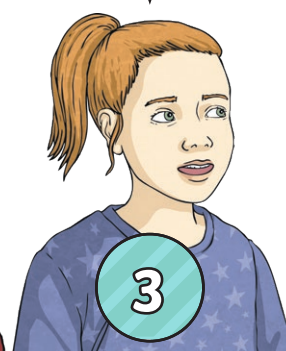
Which of these descriptions best describes a statement?

A sentence which conveys a simple piece of information.

A sentence that someone says out loud.

A sentence containing a direct instruction telling someone to do something.

A sentence that ends in a full stop.



Digit Five



Rearrange the words to make four sentences. They are all missing their punctuation. Which one is a question? Circle the digit next to the correct answer.

1

those

have

tusks

elephants

huge

2

me

to

cards

those

pass

3

to

which

bag

Jin

belongs

4

how

sounded

orchestra

the

beautiful

Digit Six



Read the text below. You may notice that it is missing some question marks. How many missing question marks can you find? Circle the correct answer.

1

2

3

4

Margot and Dan arrived at the bus stop. "I wonder how long it will take to get into town," said Margot.

"It shouldn't take too long. Pass me my bag, will you," Dan said, while rummaging in his pocket. "Have you seen my wallet. I wonder if I left it on the table before I came out."

"You put it into your bag. I'm sure you did,"

replied Margot. She could see the bus turning onto their street. "Can you try that front pocket. I'm worried we will miss our ride into town. Didn't you say the film started at 2 o'clock."

The bus driver saw the pair and pulled over just in time for Dan to produce the wallet from his coat pocket. Margot sighed with relief as they both stepped onto the bus.

Enter the six-digit code below.



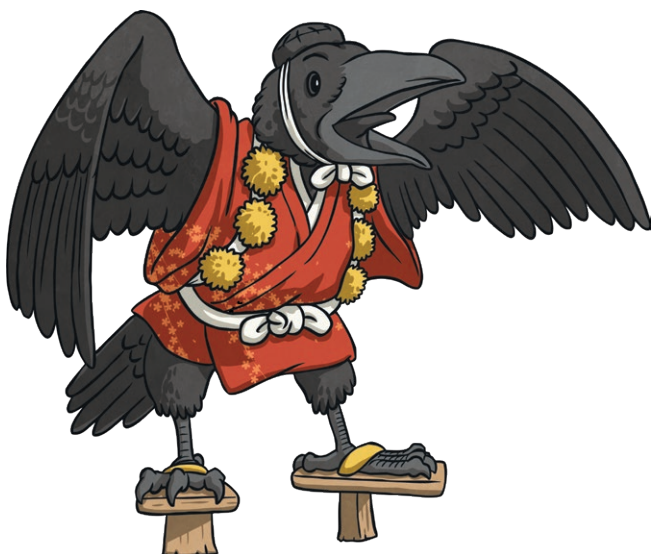
Escape the Dōjō

Today is the day of the annual SPaG samurai awards presentation. There'll be certificates, stickers and plenty of prizes given to those who have earned the title of becoming true SPaG samurai. As the ceremony is about to start, Karasu comes flying up to you in a panic: he's left the prizes on his desk in the dōjō!

Wanting to help, you quickly make your way to the dōjō and retrieve the prizes when suddenly, you hear a loud 'CLUNK'. The solid door of the dōjō has slammed shut behind you. Checking the door, you notice a keypad that is linked to the lock. If you can work out the correct code, the door will open.

Can you crack the code, escape the dōjō and make it to the presentation ceremony on time? Karasu is counting on you!

1 st digit	2 nd digit	3 rd digit
<input type="text"/>	<input type="text"/>	<input type="text"/>
4 th digit	5 th digit	6 th digit
<input type="text"/>	<input type="text"/>	<input type="text"/>





Clue for Digit 1

To reveal the first digit to the code, read each sentence in the grid below.

If the sentence has a **clause** written in **blue**, colour in the box.

If the sentence has a **phrase** written in **blue**, don't colour in the box.

When you've checked each box, the first digit will be revealed.

Karasu, who has worked at the dōjō for many years , is waiting for the prizes.	If you work quickly , you'll make it to the ceremony in time.	Karasu and Fusahira are waiting at the ceremony which is being held in the town .
You must crack the code .	Fusahira could see a large shadow between the trees .	The prizes were waiting on Karasu's desk .
Despite leaving himself a note , Karasu still forgot the prizes.	Fusahira will delay the ceremony until the prizes are returned .	Karasu forgot the prizes .
The door is locked so you need to find the code.	Unlocking this door should be your top priority.	When you unlock the door , make your way to the ceremony in town.
After finding this code , you should look for the next digit.	Fusahira is getting worried and the SPaG samurai are wondering what's wrong.	Until you return, Karasu will be fretting .

The first digit is _____ .



Clue for Digit 2

Karasu has been blowing bubbles that contain **main clauses** and **subordinate clauses**. To make things a little more confusing, none of the bubbles contain any punctuation. To find the second digit, count the number of bubbles that contain a **subordinate clause**.

while flying their kite

I like blowing bubbles

that dog is noisy

after travelling for 300 miles

Fusahira is reading a book

my pet fish has gone missing

we are visiting the park

as Fusahira is taking today's session

if you start today

because we all enjoy learning about them

The second digit is _____ .





Clue for Digit 3

Fusahira has written a set of sentences that include **noun phrases**. Count the number of words in each noun phrase. Then, write the total at the end of each sentence.

The third digit is the number that appears the **most**.

I'm not sure that you will ever be able to crack this tricky code.	
We carefully climbed up the crumbling cliff which was steeper than we had first thought.	
I think that this red flower with yellow spots is beautiful.	
Fusahira looked in amazement at the three cheeky monkeys on the dōjō roof.	
The crumpled pieces of paper on my desk make it look very messy.	
On Tuesday, I wore five different pairs of socks.	
Billy Goat decided that he was going to confront the fierce, ugly troll beneath the bridge that was terrorising everyone.	
I must be clumsy because I keep tripping over these ridiculous laces on my new shoes.	
Her mischievous grin let me know who was to blame.	

The third digit is _____ .



Clue for Digit 4

Karasu has been reading the start of his favourite story, 'How to Scare a Dragon', to Fusahira. The first page of this gripping tale is shown below. To find the fourth digit, count the number of **co-ordinating conjunctions** in the story.

How to Scare a Dragon

Chapter One

Once upon a time, there were eight SPaG samurai who worked together in a dōjō near the town. One day, a strange creature knocked on the door of the dōjō and asked the samurai for help.

"I have just come from the mountains and I'm sure that I heard roaring from a dragon or some other enormous beast!" the strange creature explained. "Will you go up there and investigate it for me? I would go but I'm terrified of anything that has wings!"

After agreeing to help, the brave SPaG samurai made their way towards the mountain. "Dragons are scared of things that are bigger than them so we should pretend to be a dragon," suggested Karasu.

"I believe that to be true for I have read it in a book," agreed Fusahira.

"It seems unlikely to work yet I don't have a better plan," mumbled Wataru.

With no other suggestions, the SPaG samurai began preparing to scare the dragon. Toko was in charge of getting the speakers, Sanjiro was in charge of finding a microphone and Varu was in charge of training the rest of the samurai in the fine art of 'roaring'.

1

The fourth digit is _____ .



Clue for Digit 5

Read the clue and write the answer with one letter in each box. The letters in the coloured boxes will spell the number of the fifth digit.

1. What type of **clause** is shown in **blue** in the sentence below?

You can escape the dōjō if you solve all six clues.

--	--	--	--	--	--	--	--	--	--	--

2. What is the grammatical term given to the words written in **blue**?

You can guess the code but you might get it wrong.

--	--	--	--	--	--	--	--	--	--	--

3. What is the grammatical term given to the words written in **blue**?

Why did Karasu forget those important prizes?

--	--	--	--	--	--	--	--	--	--	--

4. What type of **clause** is shown in **blue** in the sentence below?

Many people who wish to learn about the SPaG samurai visit the dōjō each year.

--	--	--	--	--	--	--	--

The fifth digit is _____ .



Clue for Digit 6

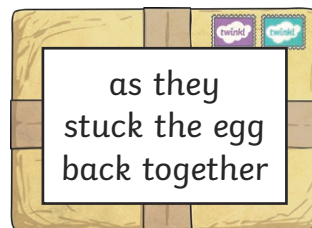
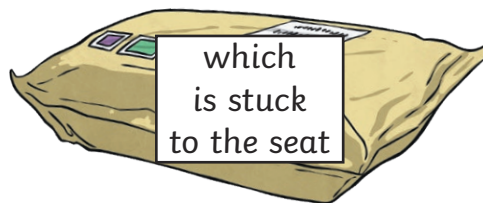
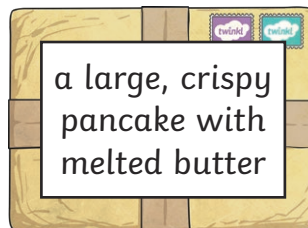
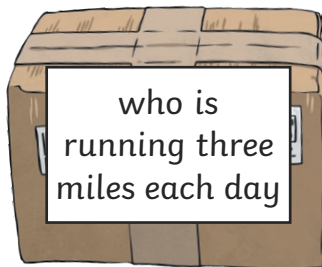
This is Phrase and Clause Close. It's a street close to the dōjō where each house has a very strange address. Instead of an address with a street name and a town, each house is assigned a different phrase or clause. For example, if a parcel arrives at the post office with a noun phrase written on it, it is delivered to the noun phrase house.

Draw a line from each letter or parcel to the correct house to deliver them.

The sixth digit is the number that is written on the house that has the most mail delivered to it.

Number 1 Noun Phrase House

Number 2 Relative Clause House



Number 3 Main Clause House

Number 4 Subordinate Clause House

The sixth digit is _____ .



Dōjō Detective: The Case of the Broken Vase

Instructions

Toko has just arrived back to the dōjō with some flowers she has picked from the garden. However, when she comes to arrange them, she realises that her favourite vase – a present from one of her former students – has smashed into pieces. Only the other Samurai have been in the dōjō this morning.



Some mysterious clues have been left next to the broken vase which may help to locate the culprit. Can you help Toko to look at the clues and track down which of the Samurai caused the breakage?

There are four clues which will lead to the culprit. To solve the mystery, you will need to solve each clue and check the information alongside each clue in the list of names.

Samurai's Name	Surname	Lucky Number	Favourite Tense	Item
Wataru	Takahashi	14	past progressive	pen
Fusahira	Kishi	13	present progressive	watch
Varu	Tashiro	14	simple past	pen
Karasu	Yanagi	14	present perfect	watch
Fuji	Tsutsui	12	past perfect	mug
Sanjiro	Takeda	14	past progressive	mug
Pikurun	Matsui	12	past perfect	mug

The culprit is _____ .



Clue One

Clue 1: Lucky Number

The culprit left behind a page from their favourite book. Count the **modal verbs** in this extract to work out the culprit's lucky number.

The weather had changed since this morning, the fog had descended and Kris could no longer see the hills on the horizon. It would surely rain soon.

He knew he should turn back; if he hurried he could still catch the afternoon train home. However, a voice inside him was telling him he ought to keep going. This may be his last chance to track down the creature. The mysterious beast might be long gone by now but he couldn't risk letting it get away.

"We should get going," he said, turning to Milo. "We can't let this thing escape."

"Will we need this?" replied Milo, thrusting a map at Kris.

"We could follow it but it may lead us in the wrong direction," replied Kris. He examined the muddy ground carefully with his fingers before replying, "Leave the map here. We shall follow its trail instead."

The culprit's lucky number is _____.



Clue Two

Missing Surname

The culprit's surname is hidden in this puzzle. Follow the instructions below to reveal the hidden letter. This will tell you the initial of the culprit's surname.

If the sentence is in the **active voice**, colour the whole box in **green**.
If the sentence is in the **passive voice**, colour the whole box in **orange**.

The vase was dropped by someone.	The mystery will be solved by Toko.	It must have been witnessed by someone.	The vase was made by skilled craftspeople.	Many students have been taught by Toko.
Toko found the vase on the floor.	The students will arrive at the dōjō soon.	The room is used by many people.	Toko enjoys her daily walks.	All of the Samurai take care of the gardens.
Many different flowers grow in the garden.	Toko has swept the pieces from the floor.	The vase was given to Toko by a grateful student.	One student heard a loud crashing sound.	Someone must be able to solve the mystery.
Toko loves vases and ornaments.	Other Samurai often fill the vase with flowers.	The flowers were hand-picked by Toko.	Toko put the vase on the table yesterday.	One of the Samurai must know something.
Many people enter the dōjō each day.	The wind could have blown it over.	The vase is polished regularly by Toko.	Toko shut the window this morning.	The Samurai plant many different flowers.
Toko took a shorter walk than usual today.	Toko carried her flowers.	A full explanation will surely be provided.	Some pieces have scratched the floor.	The smell of flowers filled the room.

The culprit's surname begins with the letter _____.



Clue Three

Favourite Tense

Below are some sentences that the culprit had prepared for their students.

Read the sentences below. Make a tally of the underlined **verb forms** in each sentence. Then, work out the most common tense that is used - this is the culprit's favourite.

Tense	Simple Past	Simple Present	Past Perfect	Present Perfect	Past Progressive	Present Progressive
Tally						

Last night, the dogs were howling loudly outside.

You were practising your spellings for over half an hour last night.

Our grandparents are looking for a new home to live in.

I had planned to go swimming today but now I don't feel well.

Jasmine rode her scooter to the park yesterday.

What a lovely coat you are wearing today!

I am baking cupcakes for my nan's birthday.

I was thinking that we might go for a walk later.

The bathroom tap was leaking until the plumber fixed it.

The door had been shut before the window blew it open.

The athletes have run over 20 miles so far.

My stepsister and her friends have finished their homework project.

The cat has eaten all of the cake.

We love visiting this museum; it's so interesting.

We were ringing the bell for a long time before anyone answered.

The culprit's favourite tense is _____.



Clue Four

Mystery Item

The Samurai culprit left a mystery item at the scene. To work out which item was left behind, work out which of the following sentences from each list is **grammatically correct**.

Tick one grammatically correct sentence from each list.

1. Last night, we are going bowling with friends.
2. In two weeks' time, I will be getting my new kitten.
3. At the moment, we will be waiting for the parcel to arrive.

1. We took the dog for a walk once we find his lead.
2. Once we found his lead, we took the dog for a walk.
3. Once we found his lead, we take the dog for a walk.

1. Currently, I was thinking we could go to the park.
2. Next Friday, I had been baking a cake for my neighbour.
3. This afternoon, my parents will be collecting me from school.

1. When Anida arrives, we can all start the celebrations.
2. We can all start the celebrations when Anida arrived.
3. When Anida arrived, we can all start the celebrations.

1. The butchers shop closed after it had run out of produce.
2. After it has run out of produce, the butchers shop closed.
3. The butchers shop closed after it runs out of produce.

1. Tomorrow morning, I was painting a picture for my room.
2. Earlier today, we were learning about the Celts in class.
3. Presently, we had played football on the park.

If the most common number was...	1	2	3
... the mystery item is....	watch	mug	pen

The mystery item is _____.

Challenge Cards

Challenge

Write down **six** words that use an apostrophe for a contracted form.

+ 5 points

twinkl.com

Challenge

Write down **two** reasons that someone might need to use an apostrophe in their writing.

+ 5 points

twinkl.com

Challenge

Rewrite the sentence using the correct punctuation.

before climbing the mountain
kanesha and fred packed a bag full
of food and essential equipment

+ 6 points

twinkl.com

Challenge

Which word uses an apostrophe for possession?

It's almost three o'clock. We'll leave
now so that we can make it to
Simon's house in time.

+ 6 points

twinkl.com

Challenge

Write a sentence that uses at least **two** hyphenated words.

+ 7 points

twinkl.com

Challenge

Add parenthesis to this sentence.
Rewrite it using the correct
punctuation.

Our pet cow is extremely friendly.

+ 7 points

twinkl.com

Challenge

Explain how the extra comma changes the meaning of the second sentence.

1. After they left Graham, Innes and Mildred went to the park.
2. After they left, Graham, Innes and Mildred went to the park.

+ 8 points

twinkl.com

Challenge

Your friend has written this sentence. Write down **two** pieces of advice that you would give them to help correct the punctuation.

Miguel closed the door and said
"it's freezing out there!"

+ 8 points

twinkl.com

Chance Cards

Chance

Treat:
+ 10 points

twinkl.com

Chance

Treat:
+ 10 points

twinkl.com

Chance

Treat:
+ 10 points

twinkl.com

Chance

Treat:
+ 10 points

twinkl.com

Chance

Trick:
- 10 points

twinkl.com

Chance

Trick:
- 10 points

twinkl.com

Chance

Trick:
- 10 points

twinkl.com

Chance

Trick:
- 10 points

twinkl.com

Pick up a **chance card**.
Good Luck!

How many capital letters are missing?
john travelled to cardiff on wednesday.

Write the contracted form of the words in **bold**.
We **shall not** listen to her.

Challenge

Write a sentence that uses a semi-colon.

+2 Points

+5 Points

+10 Points

Which word should be rewritten using a hyphen?
When my application didn't arrive, I resent it.

+10 Points

Write a sentence that uses dashes for parenthesis.

+5 Points

Write a question that begins with the word **will**.

+2 Points

Chance

Add the missing dash.
Alex is visiting the mountains today their first visit this year.

+10 Points

Add the missing apostrophe.
Where are your youngest brothers new shoes?

+5 Points

Pick up a **challenge card**.
Good Luck!

+2 Points

+10 Points

+5 Points

+2 Points

What punctuation **must** this sentence end in?
Are you going to eat that

Where does the hyphen go?
My friend is a fly fishing champion and a talented artist.

Add in the brackets.
My new puppy a pug is very well behaved.

What is wrong with this sentence?
In november, the weather will be cooler.

Place your **challenge** cards here.

Punctuation

1. Place your count names on the score

2. On your your count

3. If y answer to wr piece o

4. If card

5. If a tri

6. T



How does the sentence change without the comma? Let's stop, Moira.	Correct the punctuation. "Pikurun shouted I love SPaG!"	Where should the dash go? We all cheered at the end of the exam it had been very challenging.	Write an exclamation that begins with the word what .
+2 Points	+5 Points	+10 Points	+2 Points

Roll a dice!
If the number is even, pick up a **chance card**.
If it is odd, pick up a **challenge card**.

Monopoly

Starters on 'Start!' and write your card.

On your turn, roll two dice and move your piece around the board clockwise.

When you land on a coloured space, answer the question. You may need to write your answer down on a separate piece of paper.

When you land on a challenge space, pick up a challenge card and answer the problem correctly to score the points.

When you land on a chance space, pick up a chance card for a reward or a treat!

The first player to reach 100 points is the winner!

Place your **chance** cards here.

+5 Points
What type of apostrophe is being used?
Fuji's really excited to teach you next.

+10 Points
Where should the semi-colon go?
We won the relay it was an unexpected victory.

Challenge

+2 Points
What is missing from this sentence?
My gran is travelling on the train tomorrow

+5 Points
What punctuation could replace the commas?
I went to the beach, the one with the pier, this weekend.

+10 Points
What punctuation is missing?
I love watching two sports skiing and curling.

+10 Points	Chance	+5 Points	+2 Points
Write a sentence that uses a colon.		Rewrite the following as direct speech. Riku said that he was going to the party.	Add in the missing comma. Next week we will be making enormous clay models.

Start!
Collect 5 points every time you pass start.



Escape the Cafe

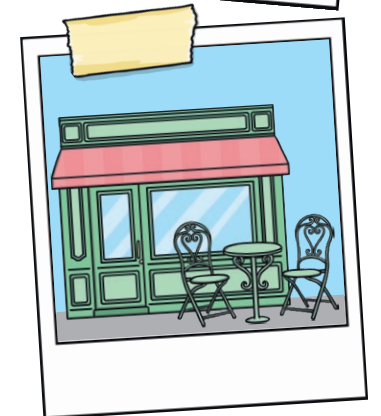


Between training sessions at the dōjō, Varu and Fuji decided to pop to a local cafe for a warming cup of green tea each. Knowing that they had an hour to spare before they were due back at the dōjō, the two sat back and began to relax into some large, plump armchairs.

A short while later, Fuji noticed something very peculiar. The cafe, which had been full of people when they had arrived, was now completely empty. Realising that the owners had probably closed the cafe without noticing the two customers in the armchairs, Varu and Fuji tidied up their tray of drinks and headed for the exit.

Unfortunately, when Varu reached for the door, the pair discovered that they had been locked inside the cafe! With only 30 minutes left until their next session at the dōjō, the two began to panic. Just then, Fuji noticed a keypad on the side of the door. If they could crack the code, they would be able to escape and get back to the dōjō in time!

Can you help Varu and Fuji to escape the cafe and make it back to the dōjō in time?



<input style="width: 100%; height: 40px;" type="text"/>	<input style="width: 100%; height: 40px;" type="text"/>	<input style="width: 100%; height: 40px;" type="text"/>
1 st digit	2 nd digit	3 rd digit
<input style="width: 100%; height: 40px;" type="text"/>	<input style="width: 100%; height: 40px;" type="text"/>	<input style="width: 100%; height: 40px;" type="text"/>
4 th digit	5 th digit	6 th digit

Escape the Cafe

Clue for Digit 1



To reveal the first digit, you will need to colour in pairs of **synonyms** and **antonyms** in this grid.

If you find two matching synonyms, colour them both in **blue**.

If you find two match antonyms, colour them both in **green**.

Keep going until all of the boxes have been coloured in either **blue** or **green**. Then, count the number of **blue** squares and the number of **green** squares. The **lowest total** is the first digit of the code.

middle	join	rough	gather
valuable	annually	worthless	definite
yearly	luminous	centre	dull
collect	enormous	inconclusive	record
separate	write	course	vast

The first digit is _____.


Escape the Cafe

Clue for Digit 2



To discover the second digit, read through this unusual invitation that's been pinned to the door of the cafe. The entire invitation should be written in Standard English but some of the verb forms appear to have been written incorrectly.

Circle each incorrect verb form. Then, count the number of incorrect words. The total is the answer to the second digit.



To the lucky reader of this invitation, you are invited to the...

Tea Party with a Twist

The Tea Party with a Twist ain't for people who enjoy tea. In fact, it's quite the opposite. The Tea Party with a Twist is for them people who can't stand the taste of warm leaf water. This exquisite party first started in 1995 when Colonel T Pot realised that he were fed up of being offered tea whenever he stopped into the local cafe for a slice of cake. Naturally, he done what any upstanding gentleman in his position should do and set up his own anti-tea party.

Many years later, the Tea Party with a Twist is still going strong. Even Colonel T Pot is surprised with how good the party has taken off. So, if you don't like tea, join us next Friday at this cafe where we will be serving a variety of drinks but absolutely no tea!

The second digit is _____.

Escape the Cafe

Clue for Digit 3



For the third digit, you will need to carefully read the sentences below. One word in each sentence has been written as a noun or an adjective instead of a verb. Underline the incorrect word. Then, write the correct **verb form** using the suffixes **-ate**, **-ise** or **-ify**.

If the suffix -ate is used the most often, the third digit is 1 .	If the suffix -ise is used the most often, the third digit is 2 .	If the suffix -ify is used the most often, the third digit is 3 .
---	---	---

		Corrected Verb Form
1.	The large statue outside of the dōjō is meant to glory the achievements of all who train there.	
2.	If a training session is too tricky, a samurai will always be happy to simple it for you.	
3.	Varu has buried a sandwich in the garden of the dōjō; she's hoping that it will begin to fossil and be preserved forever.	
4.	Last week, the dōjō hall was hired out to the local hospital so that they could safely vaccine all of the members.	
5.	Before beginning her science experiment, Varu made sure to carefully sterile all of the equipment.	
6.	After a lengthy discussion, the SPaG samurai decided that they didn't need to hyphen the words 'Dōjō Training Centre'.	
7.	Being a samurai is very difficult; there are lots of moves that you need to memory.	
8.	Although the dōjō has its own well, you need to pure the water before drinking it.	
9.	So as not to alien new members, everyone in the dōjō has been invited to the annual awards ceremony.	
10.	At the end of the competition, the winner will be allowed to active the alarm that signals that a winner has been found.	

The third digit is _____.

Escape the Cafe

Clue for Digit 4



For the fourth clue, you will need to read each of these sentences. Then, colour in the **eight** boxes that contain the most **formal** sentences. When you have coloured in the eight correct boxes, the fourth digit will reveal itself.

Let's get out of here!	Your presence is requested at the dōjō this evening.	There will be much jubilation to mark this momentous occasion.
The samurai haven't ever been locked in a cafe before.	When you got out, we all cheered.	The festivities will commence at approximately 3 o'clock.
I can't believe that Varu got himself locked in the cafe.	The code is yet to be confirmed.	The two samurai purchased their beverages and proceeded to sit down.
Won't you help us to solve this puzzle?	The samurai have gotten themselves into a right pickle today, haven't they?	We will carefully consider each answer prior to entering the code.
Hope they get out soon!	Being locked inside this establishment has been quite a predicament.	Although the cafe appears to be inescapable, we shall work together to overcome this challenge.

The fourth digit is _____.

Escape the Cafe

Clue for Digit 5



To uncover the fifth digit, fill in the missing word in each sentence. Each missing word can be formed using the **root word 'act'**.

When you have finished, unscramble the letters in the green boxes to spell out the fifth digit.

act

When Toko injured her paw, Karasu

--	--	--	--	--

quickly and retrieved the

Wataru has got a new pet hamster. It's very

--	--	--	--	--	--

and spends

Varu has just bought a pet rock. Compared to the hamster, it's very still and

--	--	--	--	--	--	--	--

The dōjō's new security system is fitted with the latest in voice

--	--	--	--	--	--	--	--	--	--

technology. This means that you

can lock the doors using only your voice!

Pikurun describes herself as an

--	--	--	--	--	--	--	--

and regularly

gives speeches about how we can ensure a better life for all animals.

The fifth digit is _____.



Escape the Cafe

Clue for Digit 6

To find the sixth and final digit, complete the table below. Read each sentence carefully and decide whether it has been written using the subjunctive or not. Then, follow the instructions in the appropriate column and write that letter in the box.

When you have finished, add together the three numbers that you have revealed. This will give you the sixth digit.

Sentence	If the sentence is written in the subjunctive...	If the sentence is not written in the subjunctive...	Letter
If I were to know the answer, I would have already escaped the cafe.	write down the eighth letter.	write down the second letter.	
I wish I were more able to answer these types of questions.	write down the second letter.	write down the first letter.	
The scholars request that you be ready to leave immediately.	write down the seventh letter.	write down the tenth letter.	
Matiu is a great friend; he's agreed to accompany me to the fair this evening.	write down the fourth letter.	write down the third letter.	
Mrs Hatridge demands that you be quiet and polite throughout.	write down the fourth letter.	write down the eighth letter.	
I sincerely regret choosing to eat custard for lunch every day this week.	write down the first letter.	write down the seventh letter.	
I can't believe that this marvellous play was written in only three hours!	write down the fourth letter.	write down the seventh letter.	
Were you going to see the football match this evening?	write down the third letter.	write down the fourth letter.	
If I had known what the outcome would be, I would have voted myself.	write down the second letter.	write down the eighth letter.	
Winning the lottery would be brilliant because I could buy so many presents for my friends.	write down the fifth letter.	write down the twelfth letter.	
Fundraisers are a great way to raise vital money for great causes.	write down the fourth letter.	write down the second letter.	
It is necessary that he see a doctor immediately.	write down the twelfth letter.	write down the sixth letter.	

The sixth digit is _____.