



Great and Little Shelford C E (A) Primary School,
Church Street, Great Shelford, Cambridge, CB22 5EL

Tel: 01223 843107
Fax: 01223 841441
office@shelford.cambs.sch.uk
www.shelfordschool.org.uk

We live and work in harmony with love for one another so we can achieve our potential within a community of life-long learners

Headteacher: Mr. Chris Grey PGCE, MEd

Wednesday 25th February 2021

Dear members of the Great and Little Shelford community,

Welcome back to the second half of the Spring Term! I hope you and your families enjoyed a wonderful February half term together. There were a few days that actually felt quite spring-like! Although it is not quite the season of spring yet, we have commenced the new season of Lent. In [today's Collective Worship](#), Mrs. Alderson introduced Bishop Stephen's Lenten Challenge and the session also includes a **special video** from the school staff to the children. This can also be viewed separately on our [vlog](#). Thinking of other new beginnings, this half term's curriculum thread is *Community - Empathy*. I cannot imagine a better focus for the work ahead this half term!

Newsletter in 30s:

- Welcome Back
- Re-opening
- Arts Day and World Book Day
- Pupil, Parent Teacher Consultations
- Results to Celebrate!
- Arts Day Collage

With Monday's news that we are to re-open on March 8th, we are busy preparing to welcome back the full *community*. This is obviously fantastic news. However, we will need to continue to plan and risk-assess to ensure that our procedures continue to be in-line with guidance from the Department for Education and the Local Authority. We will – of course – keep you up-to-date and informed of our plans. The biggest elements of our planning are around staffing and the arrival and collection arrangements. You may remember that we amended these for January and we will continue to review these for March 8th onwards. Of course, our amazing staff team are busy planning ways to ensure our children re-integrate into the school *community* well.

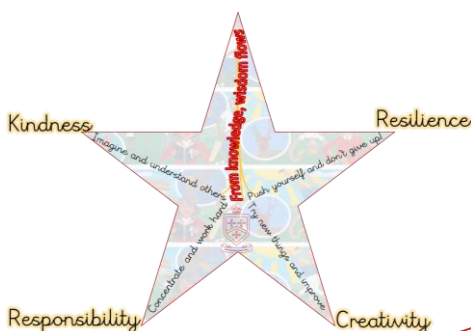
As in the previous lockdown, we have always looked for ways to keep our *community* connected. I was delighted to read in the Thank You card from parents that so many families acknowledged this sense of connection. One way we have promoted this recently has been through our Arts Day! Thank you so much to all the families for the wonderful Arts Day submissions! We have been inundated with wonderful and creative entries (collage *below*). Thank you also to Mrs. Ashton for leading this as Art Leader. The judging panel will deliberate soon and is made up of Mrs. Ashton, Mrs. Stewart, Mrs Lazarus (Art Link Governor) and me. I have already enjoyed perusing some of the entries on class pages and look forward to the judging, announcement of winners and sharing of prizes.



Another event that will be reinforcing our *community* cohesion will be World Book Day on March 4th. Some details have been circulated yesterday from Mr. Cuff, English Leader. Each class will take part in book-related activities through the day to capture and inspire the love of reading. In addition, we are launching three special competitions – from our traditional parade, to the more creative 'Book in a Jar' and 'Potato Character'! You can choose any to enter – indeed, why not go for them all!? The winning entries will receive prizes of book tokens.

Another important event for our *community* that normally takes place about now is our Pupil, Parent, Teacher Consultation. As you may remember, in September we outlined changes to our assessment and reporting arrangements for this year. We replaced the autumn consultations with an interim report. Teachers have been liaising over the plans for this in the past month. Now we are aware of the re-opening plans, we can factor in the pupils' return to school and ensure the foci of the meetings reflects the current situation. Details will follow shortly.

Recently, we have been delighted to be so well supported by our local *community*. Recently, we have received a donation from the Little Shelford Parish Committee towards the work of the school. Further to this, our bid to the Sawston Fun Run Committee for an outdoor project has also been supported with a generous contribution. This financial support, along with the endless support of our wonderful families, governors and staff really has helped us all through this difficult time. Now we look forward to the future with plenty of hope and anticipation of things to come.





Great and Little Shelford C E (A) Primary School,
Church Street, Great Shelford, Cambridge, CB22 5EL

Tel: 01223 843107
Fax: 01223 841441
office@shelford.cambs.sch.uk
www.shelfordschool.org.uk

We live and work in harmony with love for one another so we can achieve our potential within a community of life-long learners

Headteacher: Mr. Chris Grey PGCE, MEd

Finally – a last minute addition to the newsletter – I was delighted to receive a letter today from Rosemarie Sadler, Head of Service for School Improvement. In her letter, she acknowledged the exceptional Phonics results attained recently. 93.3% of our Year 2 pupils achieved the expected standard in their phonics screening in November. As some of you may know, this has been an area we have been proactively developing over the past two years. An extract from her letter is below:

The analysis of phonics outcomes of the Year 2 cohort for December 2020 shows that phonics results for your school are in the top ten of Cambridgeshire Local Authority maintained Primary schools and in the top twenty of all schools in Cambridgeshire.

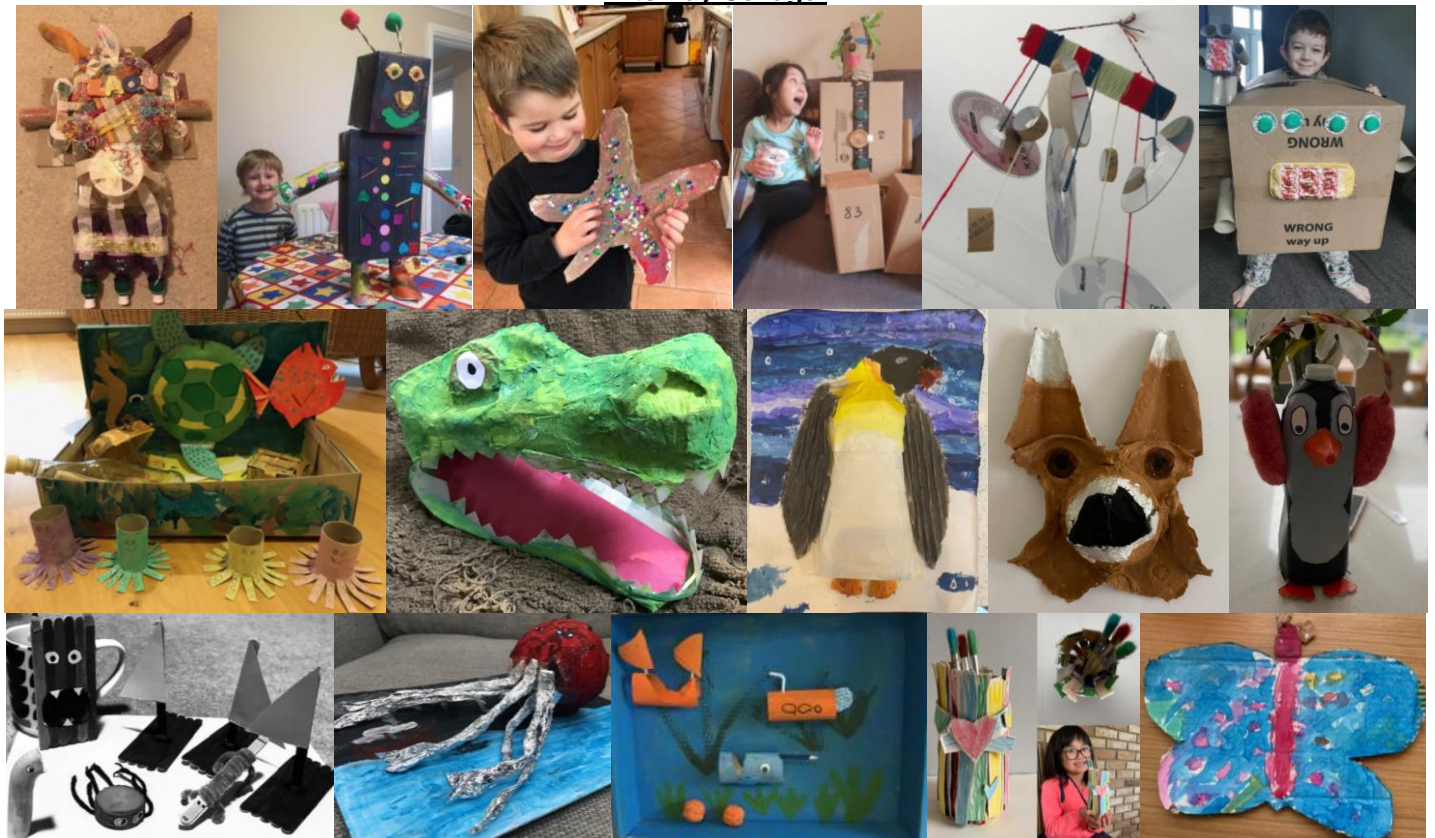
The results at your school are well above the Cambridgeshire average of 79.6% and the current national average of 78.3% ... This is a fantastic achievement and one to celebrate. I thank you and your staff for all your great work.

I would like to say a particular thank you to the Reception, Year 1 and Year 2 teams for their exceptional work – acknowledged by these results. Additionally, a huge ‘well done’ to the children for their achievements and a heartfelt thanks to the families for their support of our approach to phonics.

With best wishes,

Chris Grey,
Headteacher

Arts Day Collage:



PROUD TO BE A
MUSIC MARK
SCHOOL





Great and Little Shelford C E (A) Primary School,
Church Street, Great Shelford, Cambridge, CB22 5EL

Tel: 01223 843107
Fax: 01223 841441
office@shelford.cambs.sch.uk
www.shelfordschool.org.uk

We live and work in harmony with love for one another so we can achieve our potential within a community of life-long learners.

Headteacher: Mr. Chris Grey PGCE, MEd

Celebration Worship - 12th February 2021

As pupils joined the Zoom call, we shared [this video](#), reflecting on Jesus' time in the desert. This links to Mrs. Alderson's Wednesday Collective Worship around Shrove Tuesday (the last day before Lent). We also noted it was Chinese New Year!

We opened the celebration worship with our signed gathering statement linked to our school vision:

Leader: *We live and work in harmony* **Response:** *With love for one another*

Cyril - **Miss Wong** - for sharing lots of detail about your culture, including wonderful skill in playing traditional Chinese musical instruments.

Star Writer Awards:

Emily F - for a fantastic advert that contained all the persuasive features covered.

Lola S - for a wonderful acrostic poem about Lockdown Lunch ... what a wonderful menu!

Headteacher's Awards:

- **Evelyn A** - for excellent effort in reading, leading to great progress with blending.
- **Arabella H** - for such enthusiasm when exploring Chinese New Year this week.
- **Olivia P** - for a wonderful, eye-catching advert for a pick-axe - complete with celebrity endorsement!
- **Florence D** - for a wonderful advert for a mountain climbing coat, preceded by some great research that influenced your advert.
- **Matias B** - for an excellent advert for an imaginatively-designed mountain climbing coat: inspired by the shape of a mountain!
- **Jasper C** - for excellent investigation into tangrams and a creative video showing your work.
- **Oliver S** - for a positive attitude to learning this half term - great enthusiasm and good growth mindset.
- **Joshua L** - for a well-planned investigation into shadows. This included lots of great reasoning.
- **Harley S** - for always seeing the rainbow in the clouds! Harley always stays positive and enthusiastic!
- **Wilf W** - for a stunning observational art piece for a project called 'Through the Window'. (Wilf, are you taking commissions yet!?)
- **Dougie C** - for always working hard and trying your best across all home learning activities.
- **Jessica P** - for hard work in every home learning activity - including overall quality and presentation.

Housepoints: this week's winning house is the house of equality - the otters!

Announcements

World Book Day

You will have seen a flyer from Mr. Cuff regarding World Book Day on Thursday 4th March. This includes the three competitions we are running to aim to bring familiar and new, creative ways to celebrate the love of reading. Pupils attending school are welcome to wear their costume for the day!

Fundraising for School

We have joined up to My School Fund which is a scheme where parents can link purchases with participating retailers (currently Sainsbury's and Argos) and earn 2% cashback for themselves and 1% for the school. If you'd like to help please link to our school via: <https://www.myschoolfund.org> - registering is free. Many thanks for your support.

PTA

Raise funds while you shop!

AmazonSmile is a website operated by Amazon that has the same products, prices and service as Amazon.co.uk BUT when you shop on AmazonSmile Amazon donates 0.5% of the purchase price to your chosen charity. There is **no extra cost to you** - the donation is made by Amazon. When you visit AmazonSmile you simply choose Great and Little Shelford School PTA as your chosen charity. And then start all your Amazon shops on smile.amazon.co.uk to support the PTA.





Great and Little Shelford C E (A) Primary School,
Church Street, Great Shelford, Cambridge, CB22 5EL

Tel: 01223 843107
Fax: 01223 841441
office@shelford.cambs.sch.uk
www.shelfordschool.org.uk

We live and work in harmony with love for one another so we can achieve our potential within a community of life-long learners

Headteacher: Mr. Chris Grey PGCE, MEd

With **easyfundraising** you can raise free donations for the PTA whenever you buy anything online. There are over 4,000 shops and sites – including eBay, Argos, John Lewis, ASOS, Booking.com and M&S – and it won't cost you a penny extra to help us raise funds. All you need to do is sign up on the easyfundraising website and visit the site before you shop online.

You can find out everything you need to know about using both websites [here](#). Every penny raised through these websites will help raise valuable funds for the PTA to support the school's activities and equipment.

Home Learning Costs

Two very kind donors in Little Shelford have offered to support costs of home learning. Therefore if are finding the costs of paper, ink etc. a burden financially, please contact us via office@shelford.cambs.sch.uk . We can then pass on details sensitively and support where possible.

Shelford COVID Support Group

The Shelford COVID Support group has been created to help people access basic amenities (shopping, prescriptions, post etc.) should they become unable to do so as a result of COVID. We have a network of 78 volunteers who ensure every street in Great Shelford has at least one key, local contact who are willing to give their time to do this. In the first instance, touch base with Chris Smith - Christopher.i.smith3@gmail.com and you will receive details of your local volunteer.

