

Kindness

Resilience

# THE SHELFORD STAR

## WEEKLY WEDNESDAY UPDATE

*We live and work in harmony with love for one another, so we can achieve our potential within a community of life-long learners*

16h November 2022

Vol. 9

NEWSLETTER IN 60 SECONDS

Dear Members of the Great and Little Shelford Community,

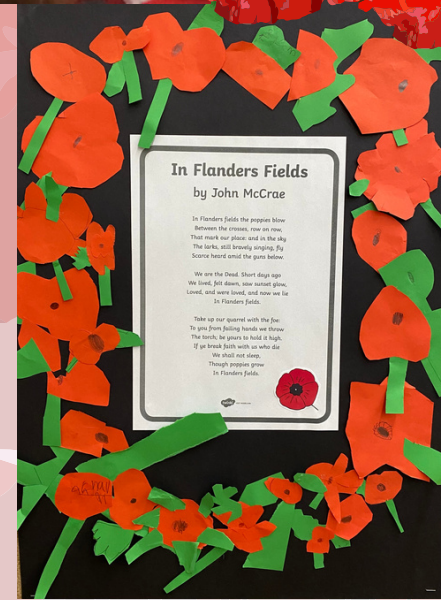
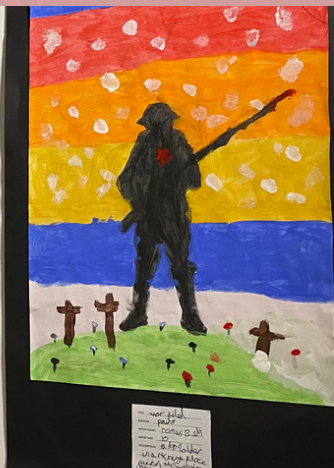
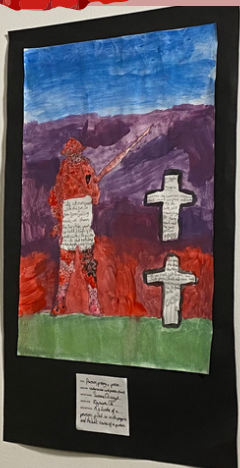
I hope this week's newsletter finds you and your family well. Last Friday, we marked Remembrance in a wonderful service led by Year 6.

The service was a beautiful combination of music, prayers, artwork and poetry. A video snapshot of the service can be seen [here](#) and on the [school's website](#).

- Welcome Back!
- Remembrance
- Reminders
- PTA Announcements
- Celebration Worship



**Year 1 also played a part, with the wreath that they had collectively made. Representatives shared their poppy wreath by laying it under our cross in the hall.**



## Reminders

---

**Uniform** - please remember that PE Days are for pupils to wear PE **Uniform**. This consists of a dark blue or black tracksuit and the house t-shirt. Trainers are the appropriate footwear for PE Days.

**Coats** - the weather is very changeable at the moment. We do go outside in the rain... so please ensure children come to school each day with a waterproof coat.

Christmas shoebox donations - the donations are being collected from the office tomorrow - Friday 18th November.

## PTA Announcements

---

The PTA Committee were delighted to welcome some new and returning members at the AGM in October. Rebecca Stacey has stepped into the treasurer role, Matt Bell has returned for a swan song year as secretary, Anum Sheikh has joined the committee, Mrs Clarke is our new teacher representative and Frances Dye is our new Governor representative. We thanked Ilse Patterson, Simon Humphrey, Laura Klimke, Daniel Ayres, Yasmine Wilkie and Miss Bachewich, for their time on the committee, as they stepped down.

As you'll have noticed from the many messages whizzing around, we're in full Christmas Fair planning mode, and hope to see lots of you there on Sunday 27th November in the school between 2-4pm. This year in particular, PTA funds will be much valued by the school, as budgets are really squeezed; This week we were able to support the school with £5800 worth of investment in books, flexible funds for every class, new football nets and anti bullying workshops. So thank you for all your contributions to make the fair a success, whether it's items for hampers or volunteering time on a stall. It's hugely appreciated and adds up to enable significant benefits for all the children.



# CELEBRATION WORSHIP

Friday 4th November 2022

## GATHERING

We entered the hall to a song relating to **our focus on Resilience:**

Never Give up by Fearless Soul

We gathered with our vision statement - also signed in sign language:

*We live and work in harmony with love for one another*

## LEBRATIONS ->

## SENDING

We were sent with our vision statement - also signed in sign language:

*we can achieve our potential within a community of life-long learners.*

We left the hall to a song relating to **resilience:** Try Everything by Shakira

## ➤ CELIA AND CYRIL THE SEAL AWARDS - KINDNESS NOMINATION

### CELIA AWARD - THEO M

for looking after another pupil and some small acts of kindness around school.

## ➤ CLASS AWARDS

Silver Bins - Y1 and Y3

Dinner Winner - Y2

Wonderful Walkers - Y1

## ➤ SHELFORD MILE

Bronze Award (10 miles) - Bertie GC, Wilf S, Bethan M

## ➤ STAR WRITERS

**Theodore Do** and **Samantha Q** - each for their interviews with an eye-witness who has just seen the Loch Ness Monster - with excellent questions and great, powerful verbs and a wonderful simile.

## ➤ HEADTEACHER AWARDS

**Catherine C** - for making a superb start to school at Shelford, coming to school every day with a big smile!

**Ruby J** - for being polite, helpful and always displaying brilliant behaviour and excellent manners.

## ➤ HOUSEPOINTS

**Housepoints: this week's winning house is domus venerantium - the house of respect, the Swans**

