

# THE SHELFORD STAR

WEEKLY WEDNESDAY UPDATE

*We live and work in harmony with love for one another,  
so we can achieve our potential within a community of life-long learners*

25th January 2023

Vol. 15

NEWSLETTER IN 60 SECONDS

Dear Members of the Great and Little Shelford Community,

I hope this week's newsletter finds you and your family well. This Tuesday, we were pleased to welcome Adrian Hall for a workshop.

Thanks to the kind generosity of the PTA, on a very cold and frosty morning, Year 3 met Adrian Hall - an explorer and expedition leader who has climbed mountains in many remote areas around the world. They started off in the playground learning about the 4 points of a compass and how to measure a distance of 10 metres using just our strides.



They then worked in pairs on an orienteering activity, finding the locations of some mini-flags hidden around the playground and field.

Back in the classroom, Adrian showed some of the equipment he finds essential to climb a mountain including duct tape to mend tears, crampons with fierce spikes and food that won't perish or be squashed. It was a fascinating talk and has set the class up beautifully to write our mountain adventure stories.

- Y3 Mountaineering Morning
- SEND Coffee Mornings
- Cake on the Gate and PTA Ceilidh
- Important Reminders
- Celebration Worship
- Announcements



## SEND Coffee Mornings

Thank you to all of the parents who attended the SEND coffee morning on Friday 13th January. It was lovely to begin to meet the community and to get some steer from you all as to how I can be most supportive.

As a group, we decided that we would meet every half term; not only for me to support you, but to facilitate the SEND parent community meeting and supporting each other to navigate what can be a complex route through education for children with special educational needs.

The coffee mornings will continue to be informal, and I hope to meet many more of you in the weeks to come. Next week, I will publish dates that will take us up to the end of the year. If you do have any SEND queries feel free to contact me on:

[cpickard@shelford.cambs.sch.uk](mailto:cpickard@shelford.cambs.sch.uk) my usual working days are Thursday and Friday.

Mrs. Claire Pickard

# Arts Days

## 9th and 10th February

We are looking forward to hosting two days' of exciting art activities: an Indian dance workshop for EYFS and KS1 provided by 'Primary Workshops for Schools', and acrylic painting on canvas boards for KS2, also with an Indian theme, facilitated by visiting artist, Heidi Street-Ward.

KS2 classes are looking for 2 or 3 parent volunteers to assist in each of their workshops. Class teachers will liaise with class reps, so please contact them if you are able to help at the following times:

Thurs 9 <sup>th</sup> Feb	Fri 10 <sup>th</sup> Feb
Year 4 - 9am - 12pm Year 5 - 12.45pm - 3.30pm	Year 3 - 9am - 12pm Year 6 - 12.45pm - 3.30pm

We are also looking for donations of old, adult-sized shirts to use as art aprons. Please send these in as soon as possible.

The painting workshops will take place in the Think Tank so please be aware that Breakfast Club will be relocated over those two days:

Thurs 9 <sup>th</sup> Feb	Fri 10 <sup>th</sup> Feb
Year 3 Classroom	Hall



## Cake at the Gate

---

***The Y5 Cake at the Gate will take place this Friday 27th January at collection time. This is open to all families and the proceeds of this will go to the PTA.***

***We are very grateful for the amazing support of PTA events, which raise a significant amount for the school. This enables us to undertake a great variety of events. Please consider supporting our upcoming Ceilidh (details below).***

## Important Reminders

---

- **PE Kit** is navy blue / black plain tracksuit with the house t-shirt for PE days.
- **Punctuality** - the school day starts at 8:45am with improvement time in class. The gates close at 8:55am. Arrival after this is via the office please to sign in late with a member of staff, ordering lunch.
- **Parking** - in-line with the punctuality reminder above, please do continue to allow enough time to travel to school. If travelling by car, please help us to continue positive relationships with members of the community. The continued parking on double yellow lines makes road use incredibly challenging.
- We currently have a vacancy for a **part-time Teaching Assistant role**.

# PTA Announcements

*You are warmly invited to...*

*A good ol' knees-up  
with 'Catch the Pigeon' Ceilidh band (with caller)*

*Saturday 4<sup>th</sup> February 2023*

*8pm - 11pm*

*Great Shelford Memorial Hall, Woollard's Lane*



*£15 - Includes a Welcome Drink*

*(Bar and snacks available to purchase on the night by card or cash).*

*Limited availability! Reserve your place now by expressing  
your interest using the link*

<https://forms.gle/ECGXVhhZZmWFZCiU9>

*... pay later!*

*All profits to Shelford School PTA  
(Registered Charity number 1110813)*





# CELEBRATION WORSHIP

Friday 14th January 2023

## GATHERING

We entered the hall to  
Never Giving up, by  
Fearless Soul

We gathered with our  
vision statement - also  
signed in sign  
language:

*We live and work in harmony  
with love for one another*

## LEBRATIONS ->

## SENDING

We were sent with our  
vision statement - also  
signed in sign language:

*we can achieve our potential  
within a community of life-long learners.*

and 'Shine from the  
inside out'

**Young Voices-** we congratulated the children who took part in Young Voices 2023. We gave thanks to Mrs. Alderson for leading, planning and preparing the trip, along with Miss Baron and Mrs Weston for accompanying the trip.

**Whole School Attendance Award** - we shared that we had received an award for our Autumn Term attendance, placing us in the top 10% of primary schools for attendance. We congratulated all the children and would like to thank families for their continued support in attending school every day that school is available.

**Silver Bins - Year 1 and Year 3**

**Dinner Winners - Reception**

**Star Writer:**

**Eliza H and Rosie F** - each for detailed instructions on how to climb a mountain, which were thoughtfully written with a good use of fronted adverbials.

**Headteacher Awards:**

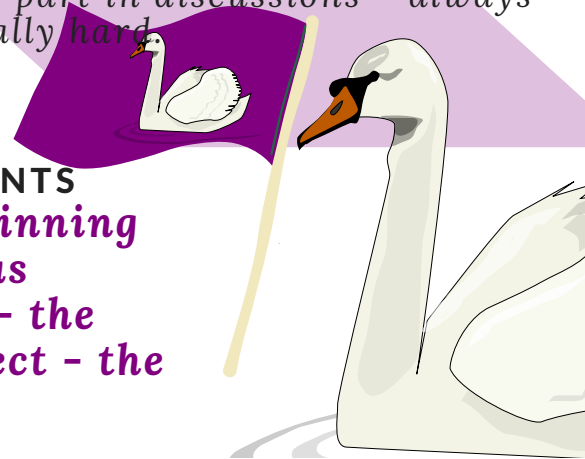
**Celeste C** - for settling in so well to Y4, working so well with a super attitude to learning.

**Austin J** - for trying hard in phonics, which is leading to super progress.

**Reuben H** - for super effort in all areas, from writing to taking part in discussions - always trying exceptionally hard.

## > HOUSEPOINTS

**This week's winning  
house is domus  
venerantium - the  
house of respect - the  
Swans**



# Shelford Twinning Association

We would like to invite you to the following event:

## PanCake and Film evening

Friday 24<sup>th</sup> February 2023

Great Shelford Free Church Hall

7.30 – 10.30pm (approx.)

**£7.00 per person**

Drinks (wine, soft drinks) available  
(donations for drinks appreciated!)

### A French Film with English subtitles

Shown on a large screen. Excellent sound system

*If you'd like to know the title of the film, please contact Penny*

There will be a raffle at the event

For catering purposes, we need to have an idea of numbers so please let us know that you are coming, and how many of you. Please also tell us if you have any dietary restrictions – gluten-free pancakes available

Please contact Penny Pearl as soon as possible, but definitely  
by Wednesday 22<sup>nd</sup> February

- by email: [twinningsec@gmail.com](mailto:twinningsec@gmail.com)
- by telephone: 01223 842483; by mobile 07783 190104

*We really look forward to seeing you!*





# Education Inclusion Family Advisor Newsletter

## January 2023



I am Naomi Shepherd and I am part of the Education Inclusion Family Advisor team.

Education Inclusion Family Advisors can offer support with a range of themes including challenging behaviours, bedtime problems, worries etc. Please get in touch via my details below for further information.

### Online workshops for Spring Term

- Communicating better Parent to Parent **7th Feb 2023**
- Digital safety/internet safety **21st Feb 2023**
- Parental wellbeing **28th Feb 2023**
- Supporting with feelings of worry **7th March 2023**
- Supporting with feelings of anger **14th March 2023**
- Sleep **21st March 2023**

All workshops are run by Education Inclusion Family Advisors.

<https://forms.office.com/e/eA4rKpZZk0>



### Encouraging Good Routines and Behaviour

After school holidays it often takes a while to get back on track with routines and behaviours.

Here are some tips and ideas to help -

1. Focus on routines. Children thrive on routines and it helps them to become organised and responsible for their time and actions.
2. Family rules are important for everyone to know what the expectation is. Agree the rules together so the children are part of the rule making and are not just being told what they are. By having a few rules and using them as boundaries for what is acceptable, they can be referred to, if you are seeing challenging behaviours.
3. Encourage children to be problem solvers. It is great for children to be able to resolve things themselves eg; sibling rivalry – allow them to work it out between themselves and only intervene if the disagreement escalates.
4. Do not ignore misbehaviour. Along with the family rules it is important to think about rewards and consequences before any incidents. Consequences need to be timely and relevant.
5. Spend some one-to-one time with your child each day. It's always important to show an interest in what they are doing both at home and school.

Click on below for financial support and advice

[Support with the cost of living - Cambridgeshire County Council](#)

Does your child have, or potentially have, an additional need or disability? Pinpoint ([www.pinpoint-cambs.org.uk](http://www.pinpoint-cambs.org.uk)) have lots of information, advice and tips. For Cambridgeshire's Local Offer go to [www.cambridgeshire.gov.uk/residents/children-and-families/local-offer](http://www.cambridgeshire.gov.uk/residents/children-and-families/local-offer)